

# PhD Scholars' Monthly Progress Review Report

*March 2025*

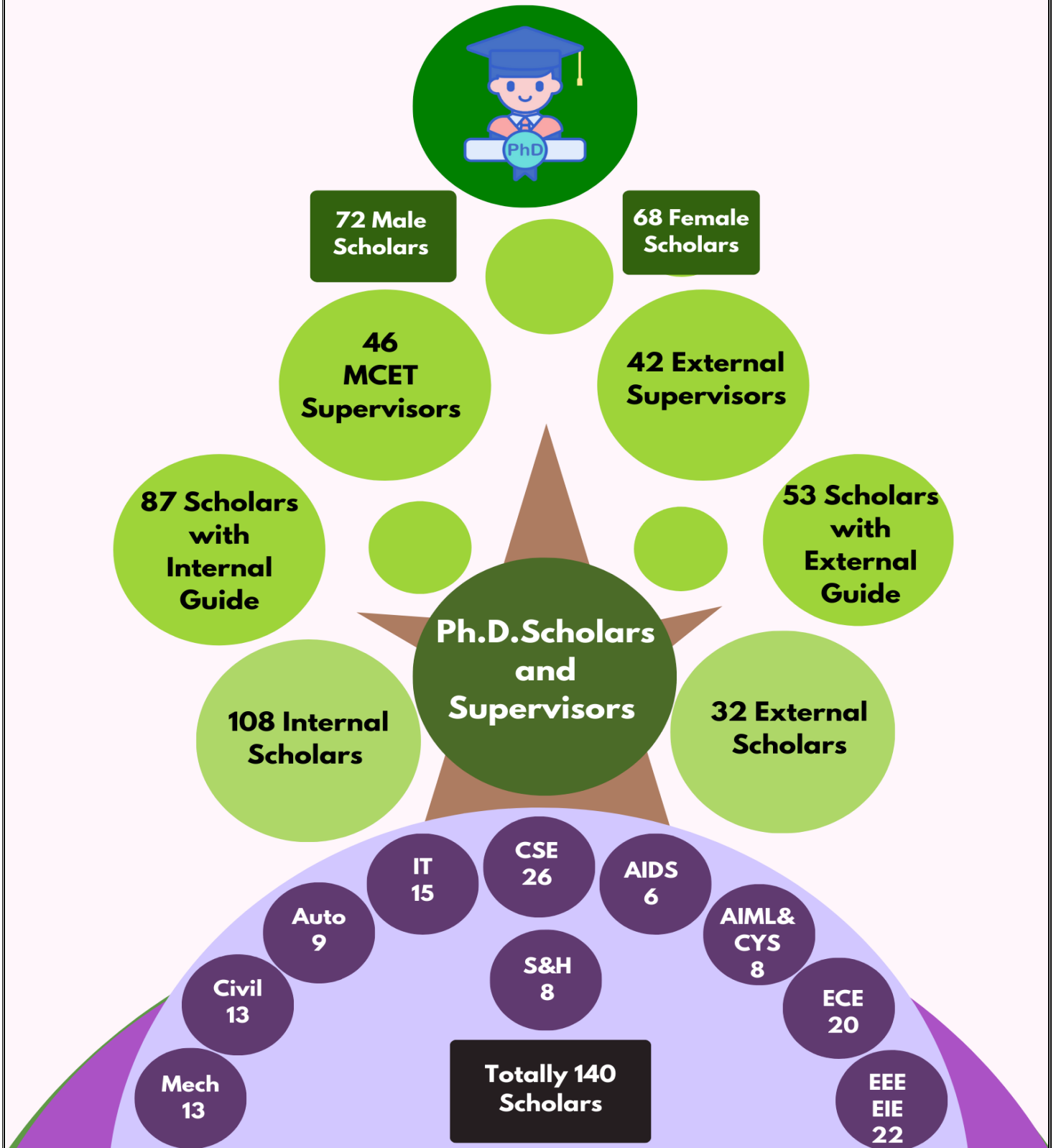


**Office of Dean  
Research & Innovation**

# Index

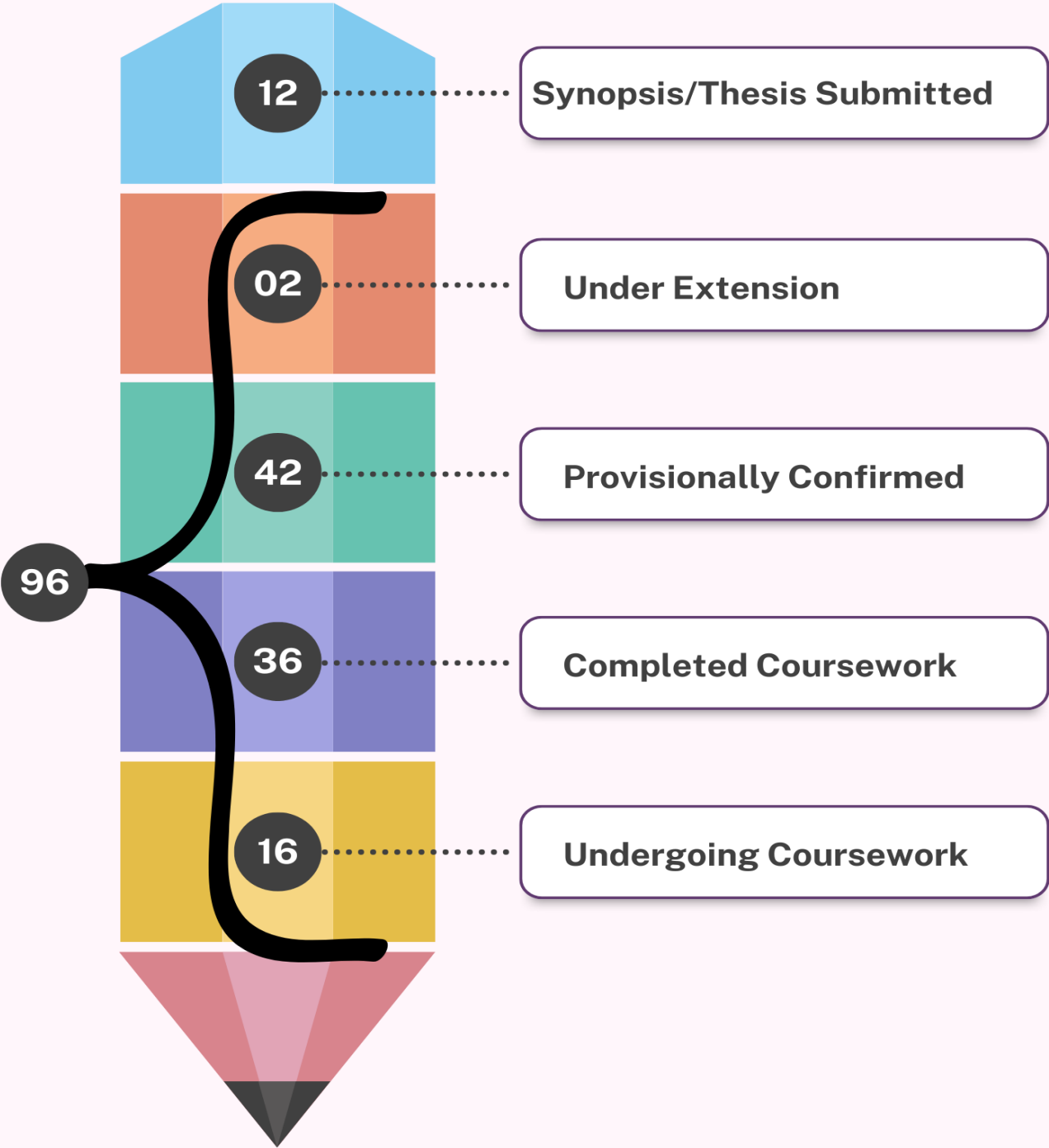
S.No.	Particulars	Page No.
<b>1.</b>	<b>Number of Ph.D. Scholars and Supervisors</b>	<b>2</b>
<b>2.</b>	<b>Status of Ph.D. Scholars</b>	<b>3</b>
<b>3.</b>	<b>Review Parameters:</b> A. Time spent for Ph.D. B. Doctoral Development Discussions C. Indexed Journal Paper Publications D. Patent Grants E. Funding & Consultancy Details	<b>4</b>
<b>4.</b>	<b>Department wise Performance Analysis</b>	<b>11</b>
<b>5.</b>	<b>Top 10 Ph.D. Scholars in MCET-March 2025</b>	<b>13</b>
<b>6.</b>	<b>Department Toppers-March 2025</b>	<b>14</b>

# Number of Ph.D. Scholars and Supervisors



# Status of Ph.D.

Totally 96 MCET Scholars reviewed-March 2025

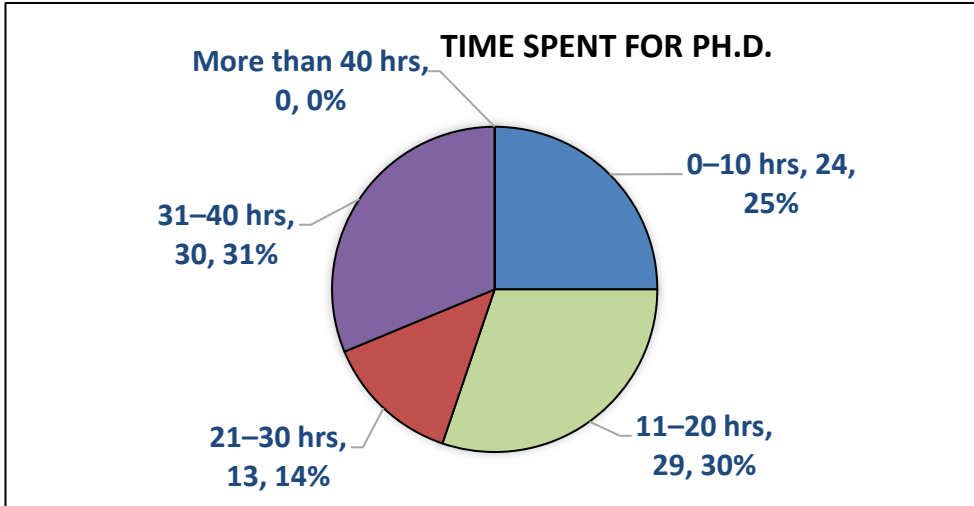


**Table 1: Ph.D. scholars' Monthly Progress Review Parameters**

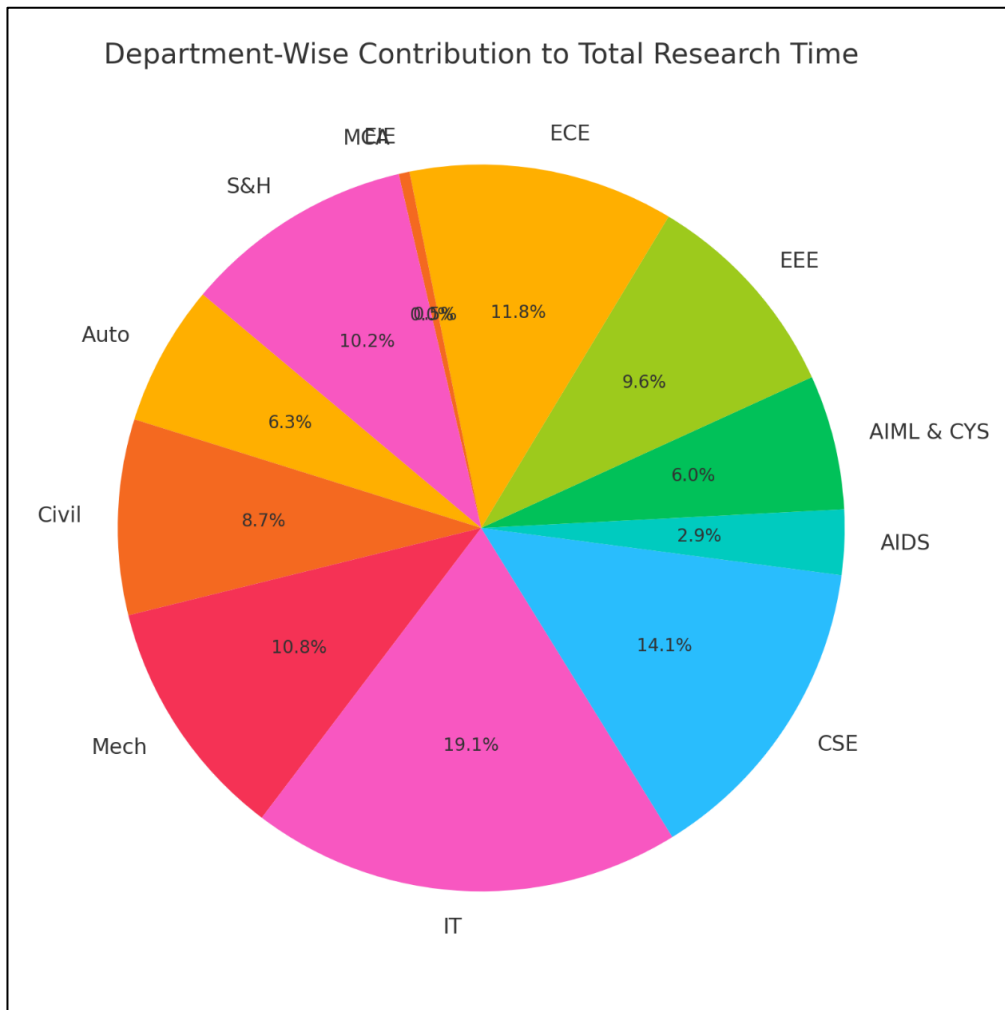
Sl. No.	Category	Marks/Month	Max. Marks
1.	Time spent for Research (Entry in terms of week 1, week 2, week 3 & week 4)	20 Marks (40 hours in 4 weeks)	20
2.	Doctoral Development Discussions	Research Presentation:10 Research seminar:15 Research Tools-Hands-on:20	20
3.	Indexed Journal paper (Best 1 to be claimed) Research paper (in AU list)/ Other Indexed Journal publication (not in AU list)	Paper Submitted:5 Revision submitted:10 Rejected & resubmitted:15 Accepted (not in AU list):15 Accepted (AU list):20	20
4.	Patent Only patent (Design should not be considered)	Filed-5 Published-10 Responded to FER-15 Granted-20	20
5.	Funding & Consultancy	Proposal submitted (Active)/ Consultancy work initiated-10 Ongoing-15 Completed-20	20
<b>Total</b>			<b>100</b>

# Review Parameters

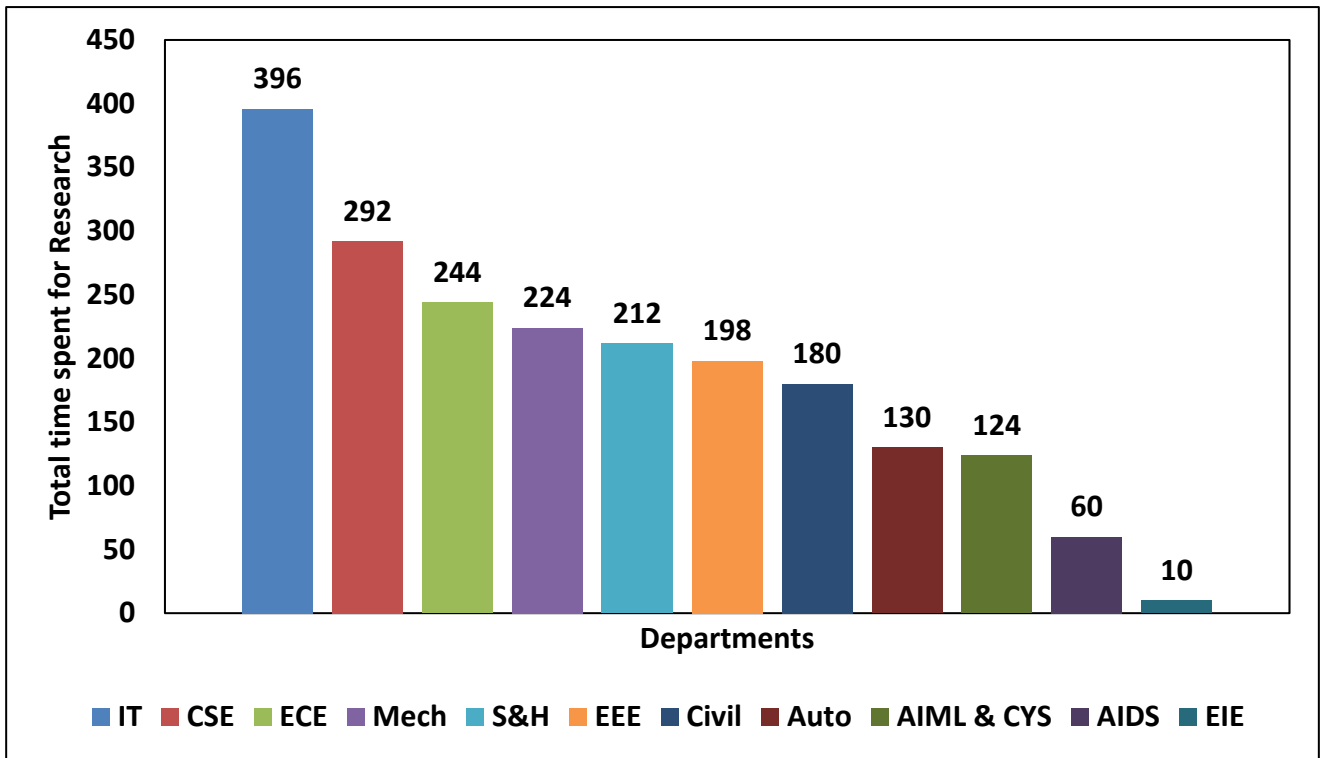
## A. Time Spent for Ph.D.



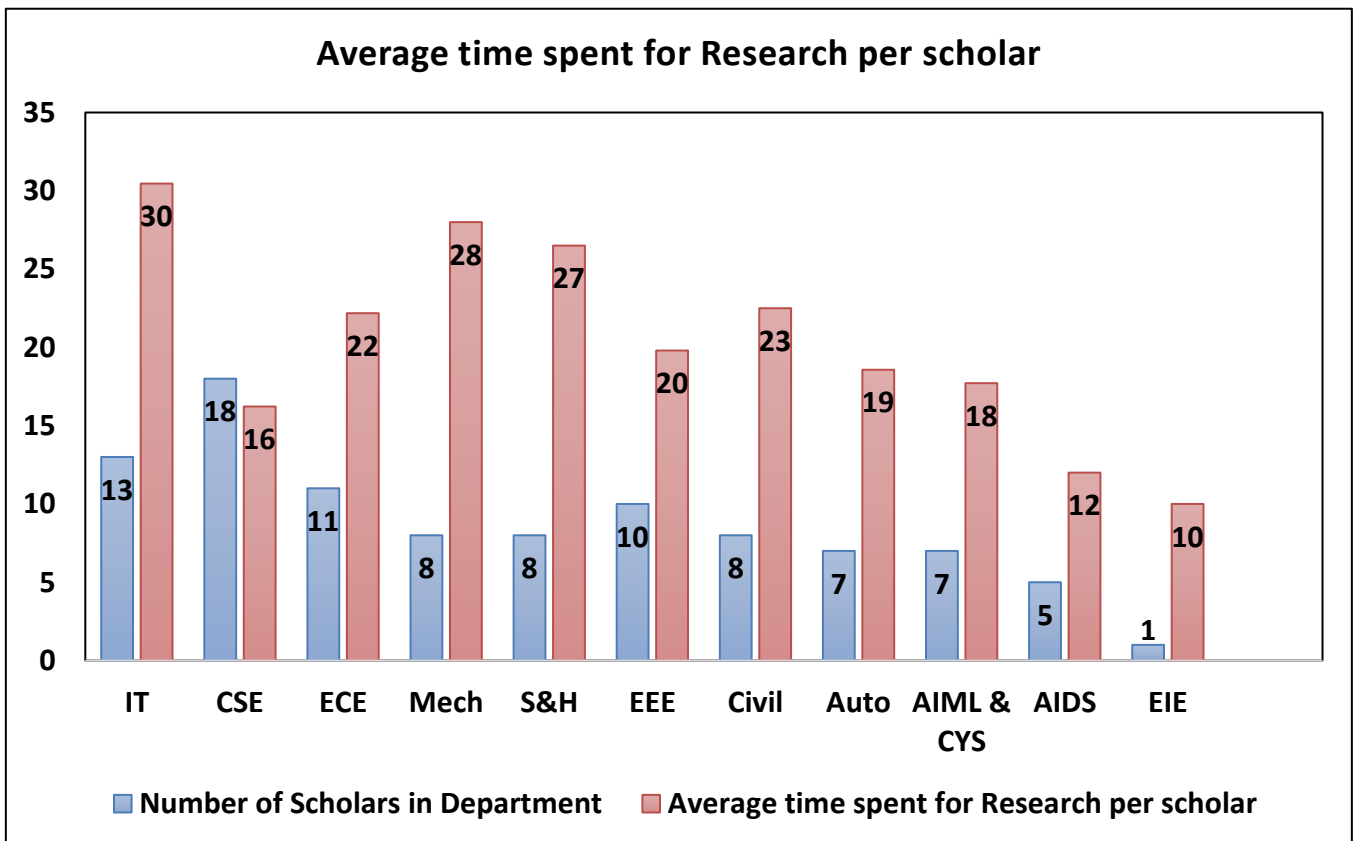
**Figure 1: Time spent for Research**



**Figure 2: Department wise contribution to total Research time**

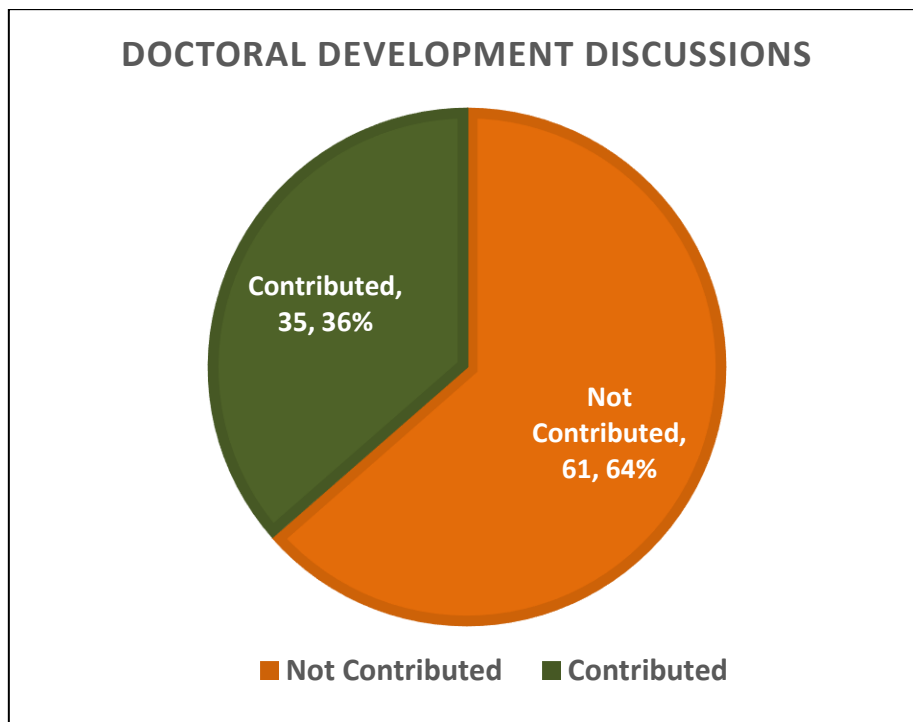


**Figure 3: Department wise time spent by scholars for Research**

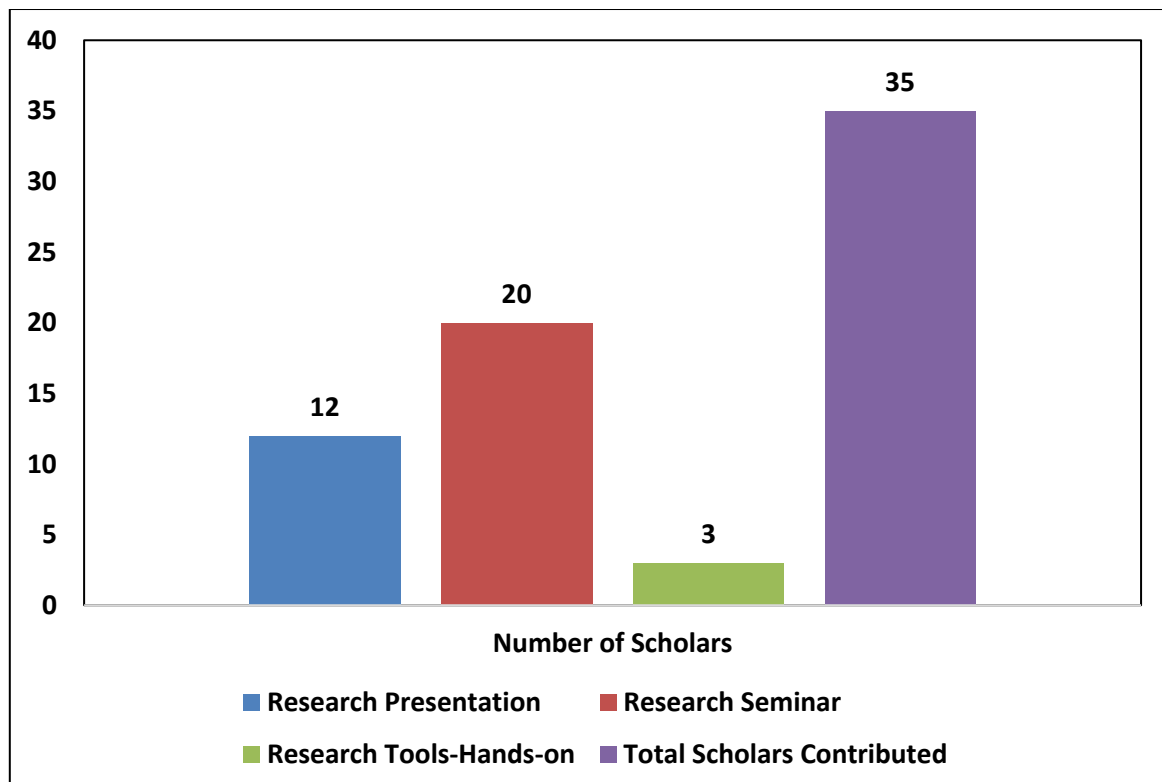


**Figure 4: Department wise No. of Scholars and Average time spent for Research per Scholar**

## B. Doctoral Development Discussions



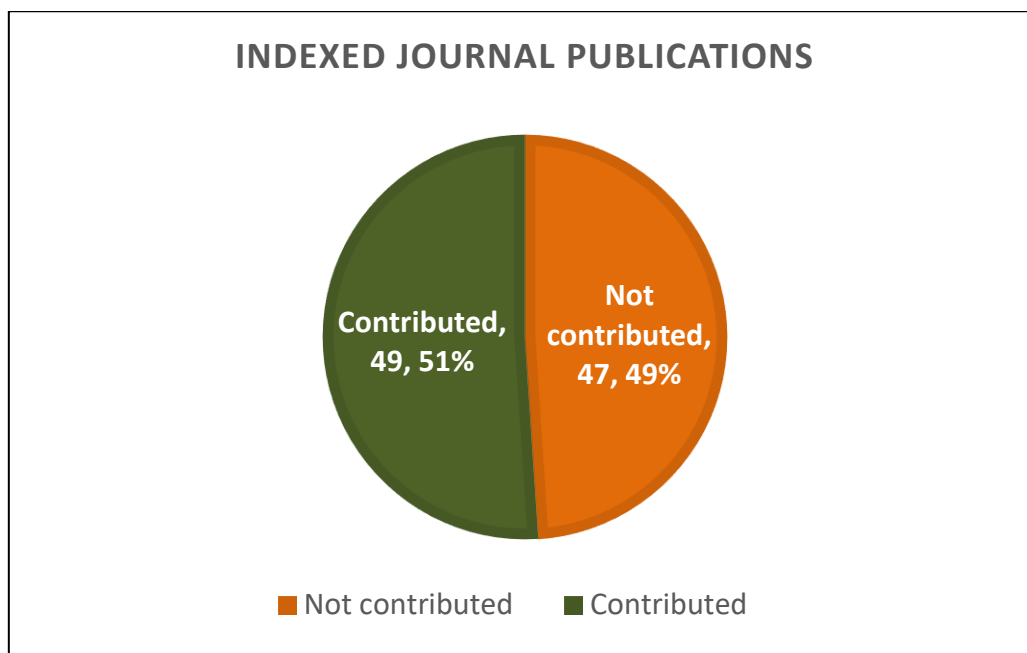
**Figure 5: Number of Scholars Contributed Vs Not Contributed in Doctoral Development Discussions**



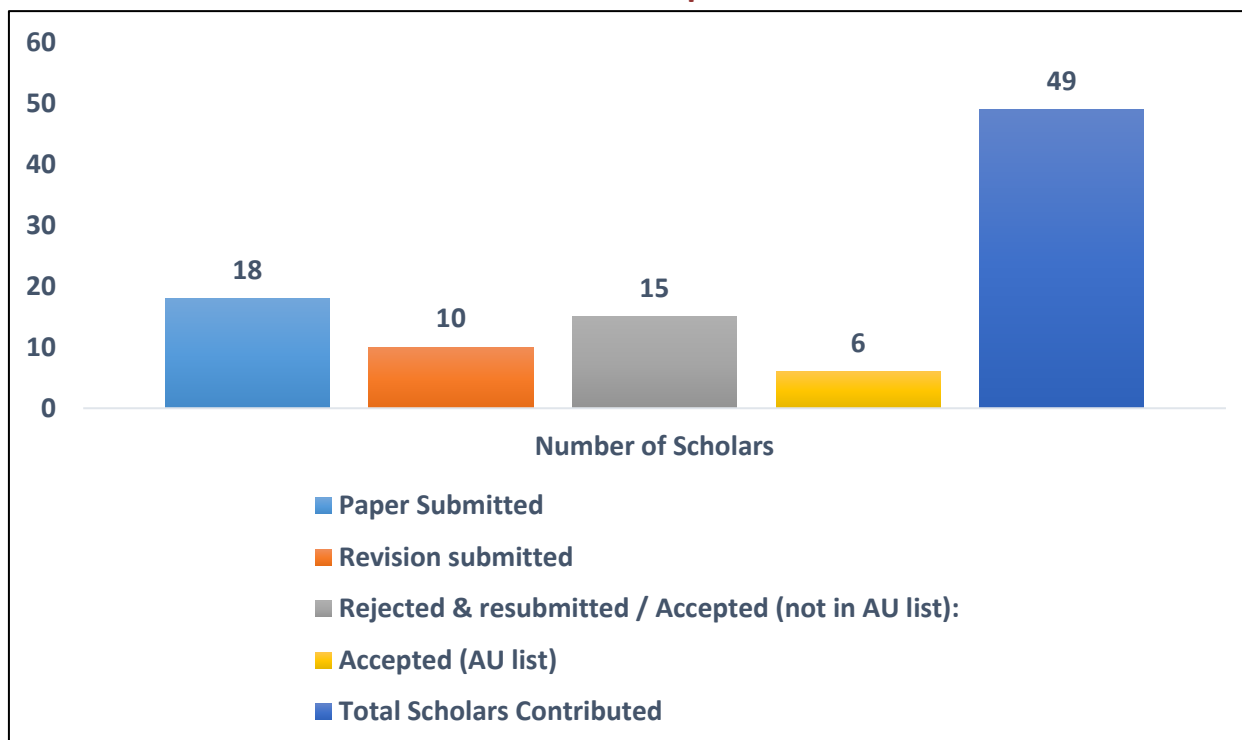
**Figure 6: Distribution of Scholars based on Doctoral Development Discussions**



### C. Indexed Journal Paper Publications

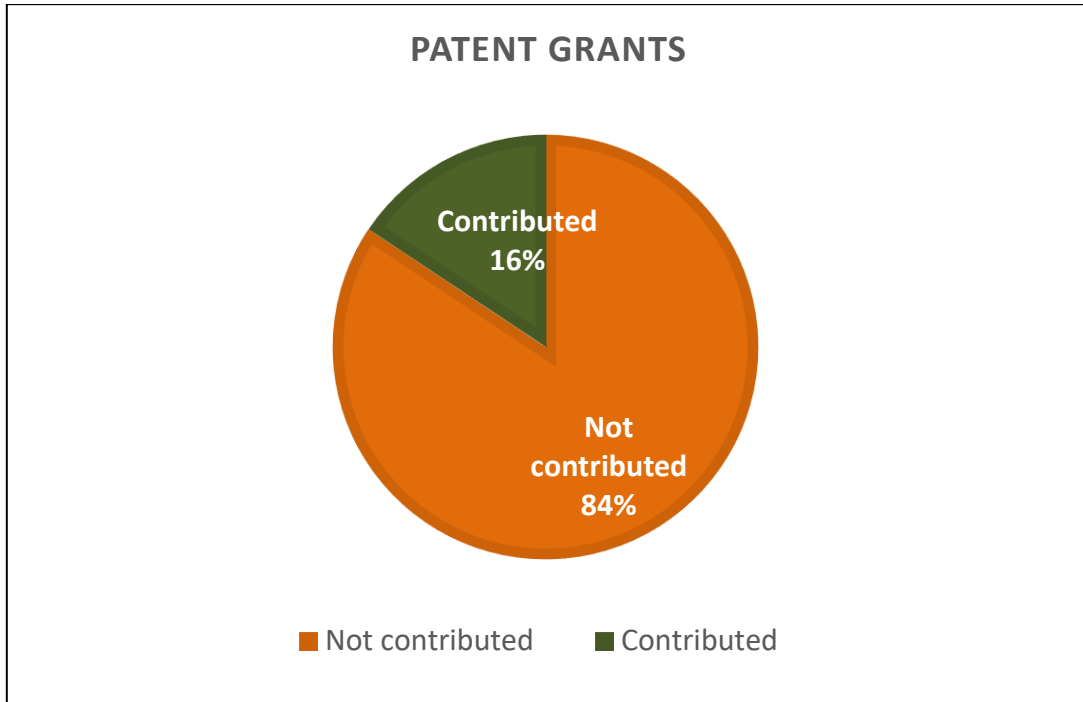


**Figure 7: Number of Scholars Contributed Vs Not Contributed in Indexed Journal Paper**

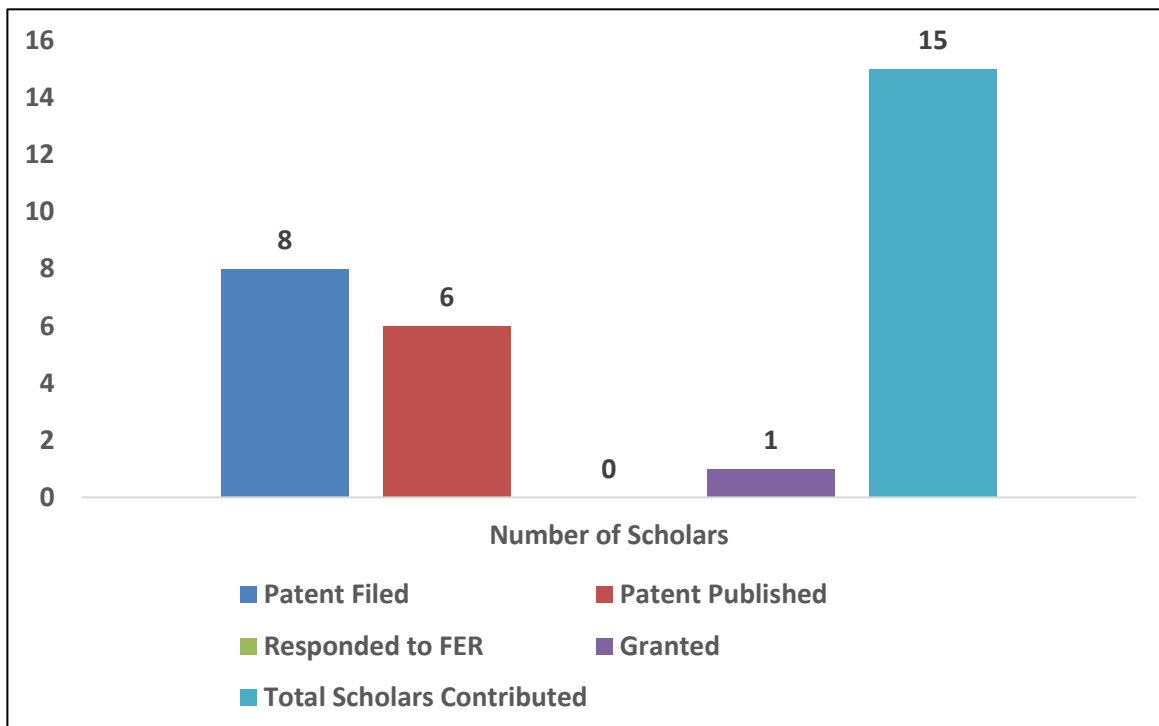


**Figure 8: Distribution of Scholars based on Indexed Journal Paper**

## D. Patent Grants

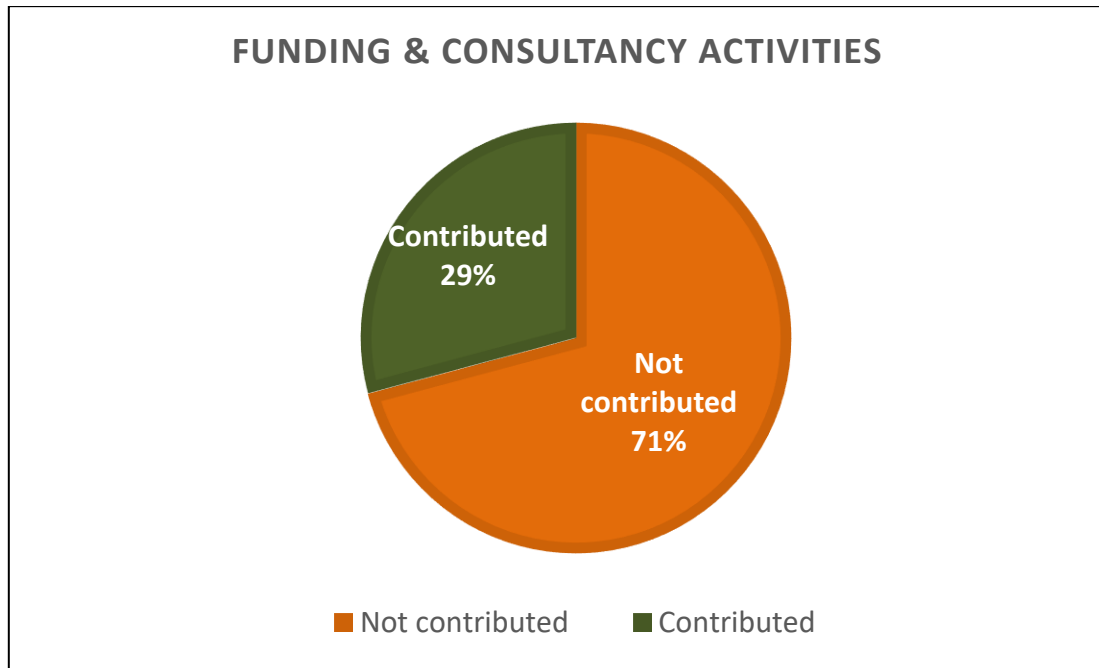


**Figure 9: Number of Scholars Contributed Vs Not Contributed in Patent Grants**

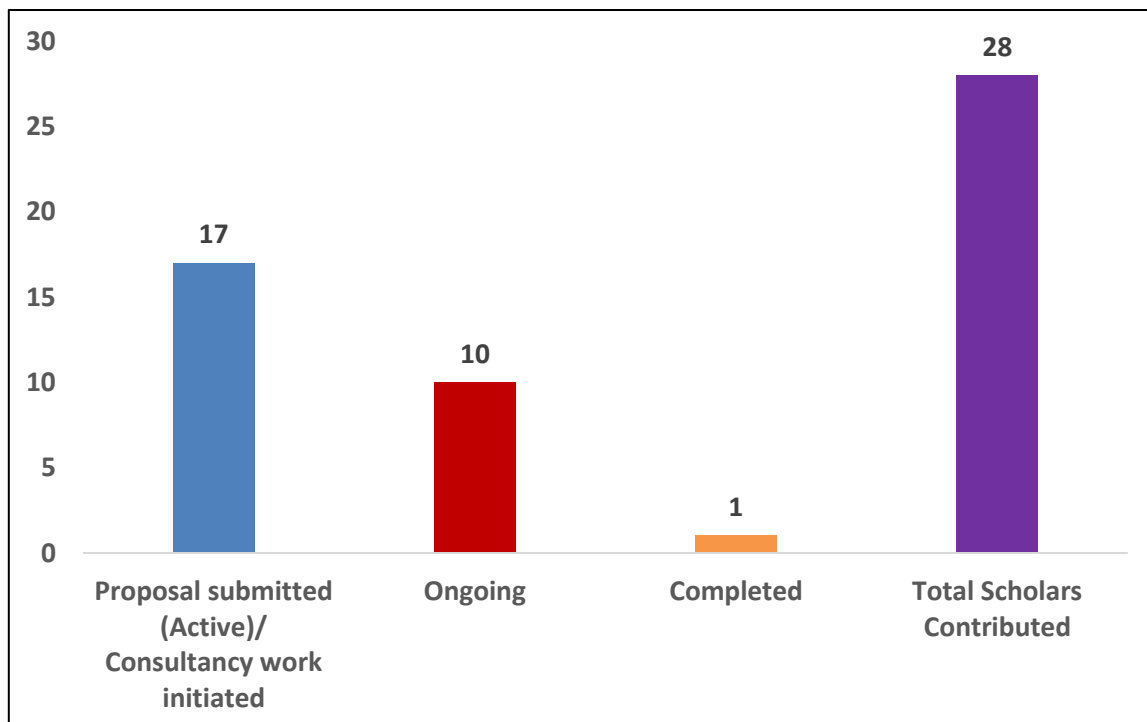


**Figure 10: Distribution of Scholars based on Patent grants**

## E. Funding & Consultancy Details



**Figure 11: Number of Scholars Contributed Vs Not Contributed in Funding & Consultancy**



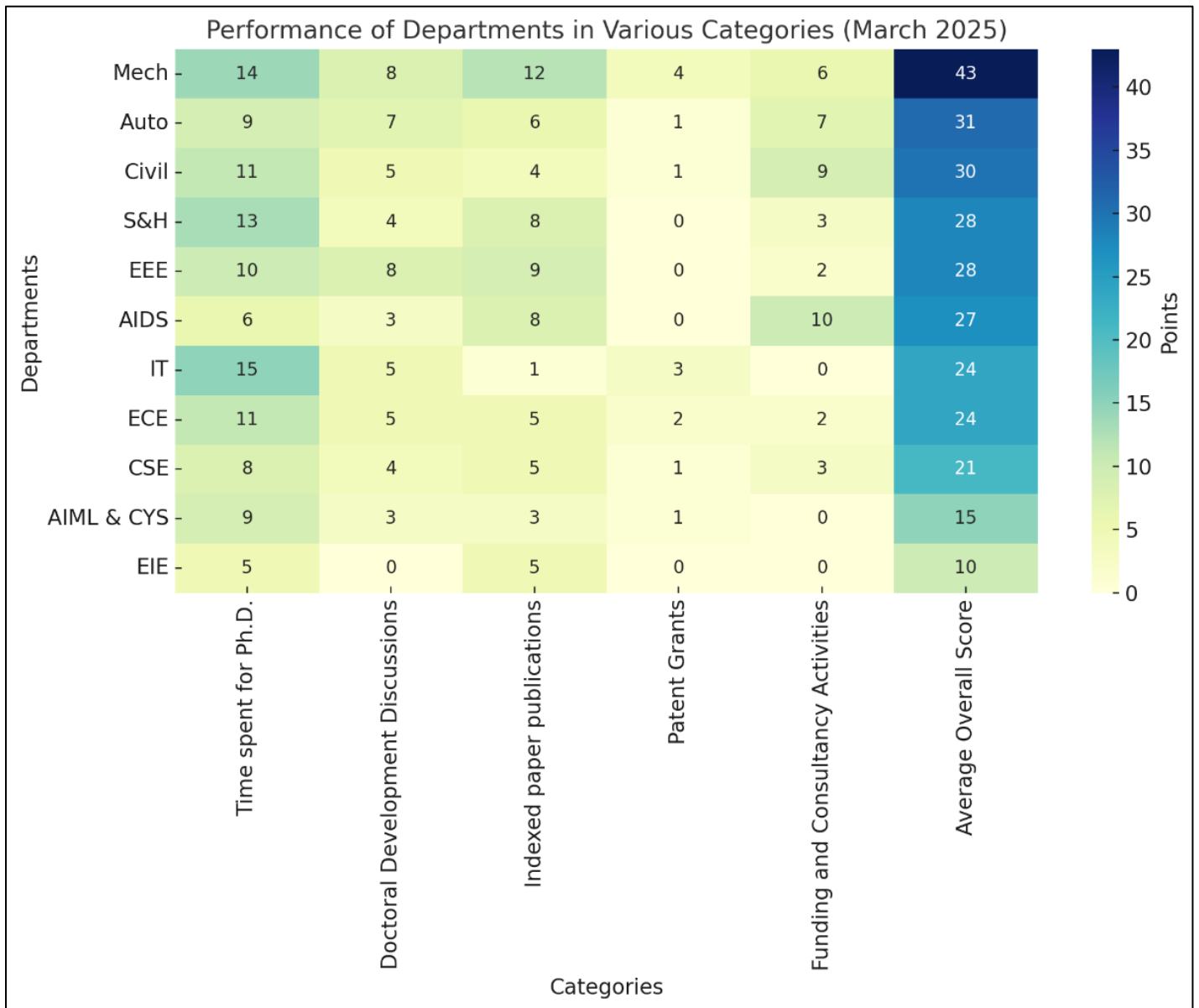
**Figure 12: Distribution of Scholars based on Funding & Consultancy**

## Department wise Performance Analysis

**Table 2: Department wise Average Scores-March 2025**

Departments	Average Points Earned					Average Overall Score
	A. Time spent for Ph.D.	B. Doctoral Development Discussions	C. Indexed paper publications	D. Patent Grants	E. Funding and Consultancy Activities	
Mech	14	8	12	4	6	43
Auto	9	7	6	1	7	31
Civil	11	5	4	1	9	30
S&H	13	4	8	0	3	28
EEE	10	8	9	0	2	28
AIDS	6	3	8	0	10	27
IT	15	5	1	3	0	24
ECE	11	5	5	2	2	24
CSE	8	4	5	1	3	21
AIML & CYS	9	3	3	1	0	15
EIE	5	0	5	0	0	10

## Department wise Performance Analysis - HeatMap Representation



**Figure 13: Department wise Average Scores – March 2025**

**Table 3: Top 10 Ph.D. Scholars in MCET - March 2025**

S.No.	Name & Dept. of the Scholar	A	B	C	D	E	Score * (out of 100)
1.	Mr. Sreejith S Nair, Mech	20	15	20	5	20	80
2.	Mr. T. Selvakumar, AIML&CYS	16	20	20	5	0	61
3.	Ms. A. Suganya, EEE	17	15	15	0	10	57
4.	Mr. C. Radhakrishnan, Auto	20	10	20	5	0	55
5.	Mr. N. Praveen Sundra Kumar, IT	15	20	0	20	0	55
6.	Ms. N. Aarthi, EEE	17	10	15	0	10	52
7.	Ms. N. Sumathi, CSE	16	10	15	0	10	51
8.	Mr. J. Venkatesh, Mech	20	15	15	0	0	50
9.	Mr. M. Sudharsanan, Civil	20	15	0	0	15	50
10.	Ms. R. Anitha, AIDS	11	15	10	0	10	46

\*Scores are based on the data provided by the Scholars

- A. Time spent for Ph.D.*
- B. Doctoral Development Discussions*
- C. Indexed paper publications*
- D. Patent Grants*
- E. Funding and Consultancy Activities*

**Table 4: Department Toppers - March 2025**

S.No.	Name & Dept. of the Scholar	A	B	C	D	E	Score * (out of 100)
1.	Mr. Sreejith S Nair, Mech	20	15	20	5	20	80
2.	Mr. M. Sudharsanan, Civil	20	15	0	0	15	50
3.	Mr. C. Radhakrishnan, Auto	20	10	20	5	0	55
4.	Mr. N. Praveen Sundra Kumar, IT	15	20	0	20	0	55
5.	Ms. N. Sumathi, CSE	16	10	15	0	10	51
6.	Ms. R. Anitha, AIDS	11	15	10	0	10	46
7.	Mr. T. Selvakumar, AIML&CYS	16	20	20	5	0	61
8.	Mr.A.Shafeek, ECE	20	15	0	0	10	45
9.	Ms. A. Suganya, EEE	17	15	15	0	10	57
10.	Ms.V.Arunadevi, S&H	4	10	15	0	15	44

\*Scores are based on the data provided by the Scholars

- A. Time spent for Ph.D.*
- B. Doctoral Development Discussions*
- C. Indexed paper publications*
- D. Patent Grants*
- E. Funding and Consultancy Activities*



## Office of Dean Research and Innovation

Dr. Mahalingam College of Engineering and Technology,  
Pollachi – 642003

Web: <https://drmcet.ac.in/research-centres-supervisors/>

Email: [deanri@drmcet.ac.in](mailto:deanri@drmcet.ac.in)