

Step 1:

Click the Internet options link given in the Tools on the top right of the window of internet explorer

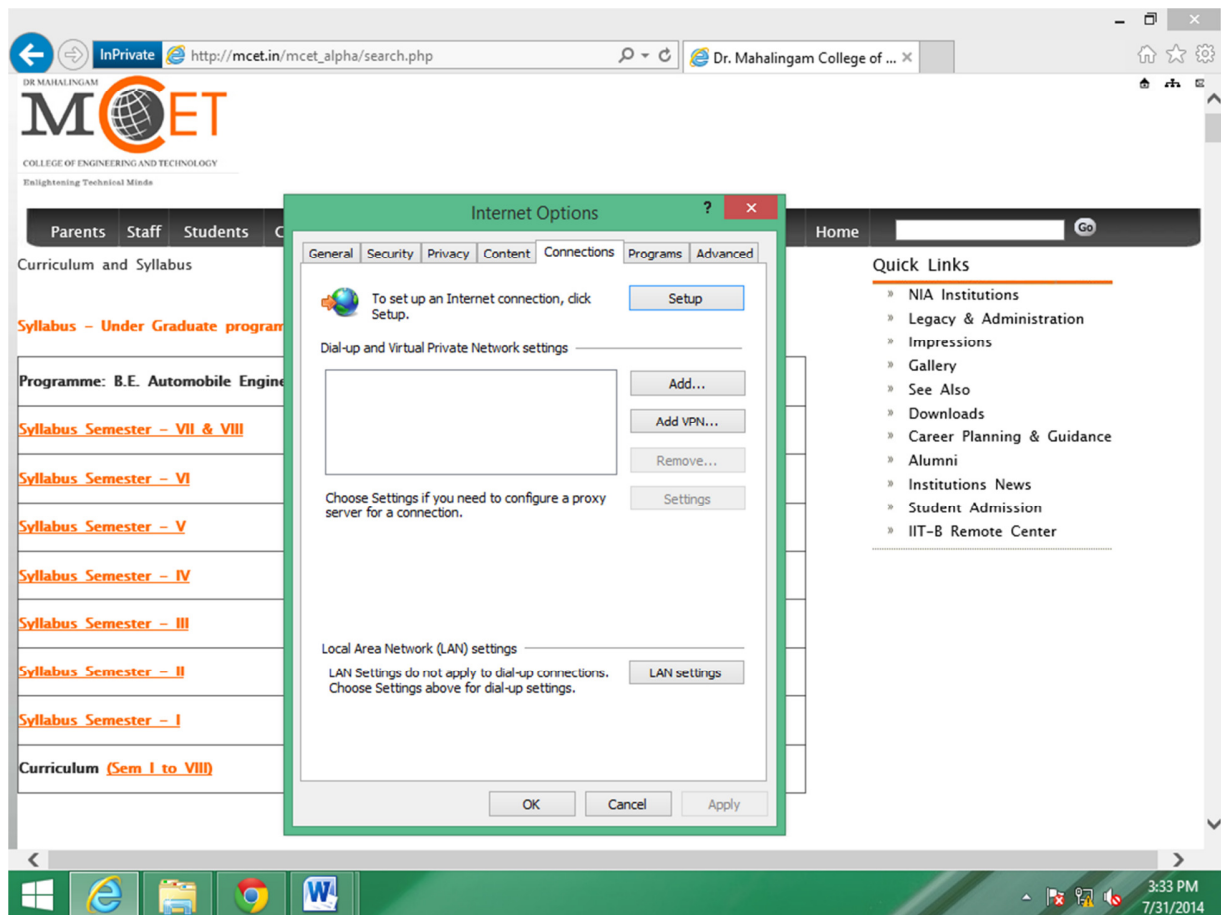
The screenshot shows an Internet Explorer browser window with the address bar displaying http://mctei.in/mcet_alpha/index_2.php?main_menu_id=13&sub_menu_id=53&. The browser's title bar reads "Dr. Mahalingam Col...". The website header features the MCOET logo and the text "COLLEGE OF ENGINEERING AND TECHNOLOGY" and "Brightening Technical Minds". A navigation menu includes links for Home, Students, Parents, Staff, Academics, Career, Central Library, Visitor, and Contact Us. A sidebar on the left lists "COE Office and Exam Cell" with sub-links for Staff, Curriculum and Syllabus, Regulations, Results, Downloads, Internal Assessment Marks, Mark Assessment Portal, News, and News Archives. The main content area is titled "Academics >> COE Office and Exam Cell >> Curriculum and Syllabus" and "Curriculum and Syllabus". Below this, it says "Syllabus – Under Graduate programme" and displays a table of links for various engineering programs. The "Tools" menu is open, showing options like Print, File, Zoom (105%), Safety, Add site to Start Screen, View downloads, Manage add-ons, F12 developer tools, Go to pinned sites, Internet options (highlighted), and About Internet Explorer. A "Quick Links" section is visible at the bottom right of the page content.

Programme: B.E. Automobile Engineering	Programme: B.E. Mechanical Engineering
Syllabus Semester – VII & VIII	Syllabus Semester – VII & VIII
Syllabus Semester – VI	Syllabus Semester – VI
Syllabus Semester – V	Syllabus Semester – V
Syllabus Semester – IV	Syllabus Semester – IV
Syllabus Semester – III	Syllabus Semester – III
Syllabus Semester – II	Syllabus Semester – II
Syllabus Semester – I	Syllabus Semester – I
Curriculum (Sem I to VIII)	Curriculum (Sem I to VIII)

Programme: B.E. Computer Science and Engineering	Programme: B.Tech. Information Technology
Syllabus Semester – VII & VIII	Syllabus Semester – VII & VIII
Syllabus Semester – VI	Syllabus Semester – VI
Syllabus Semester – V	Syllabus Semester – V

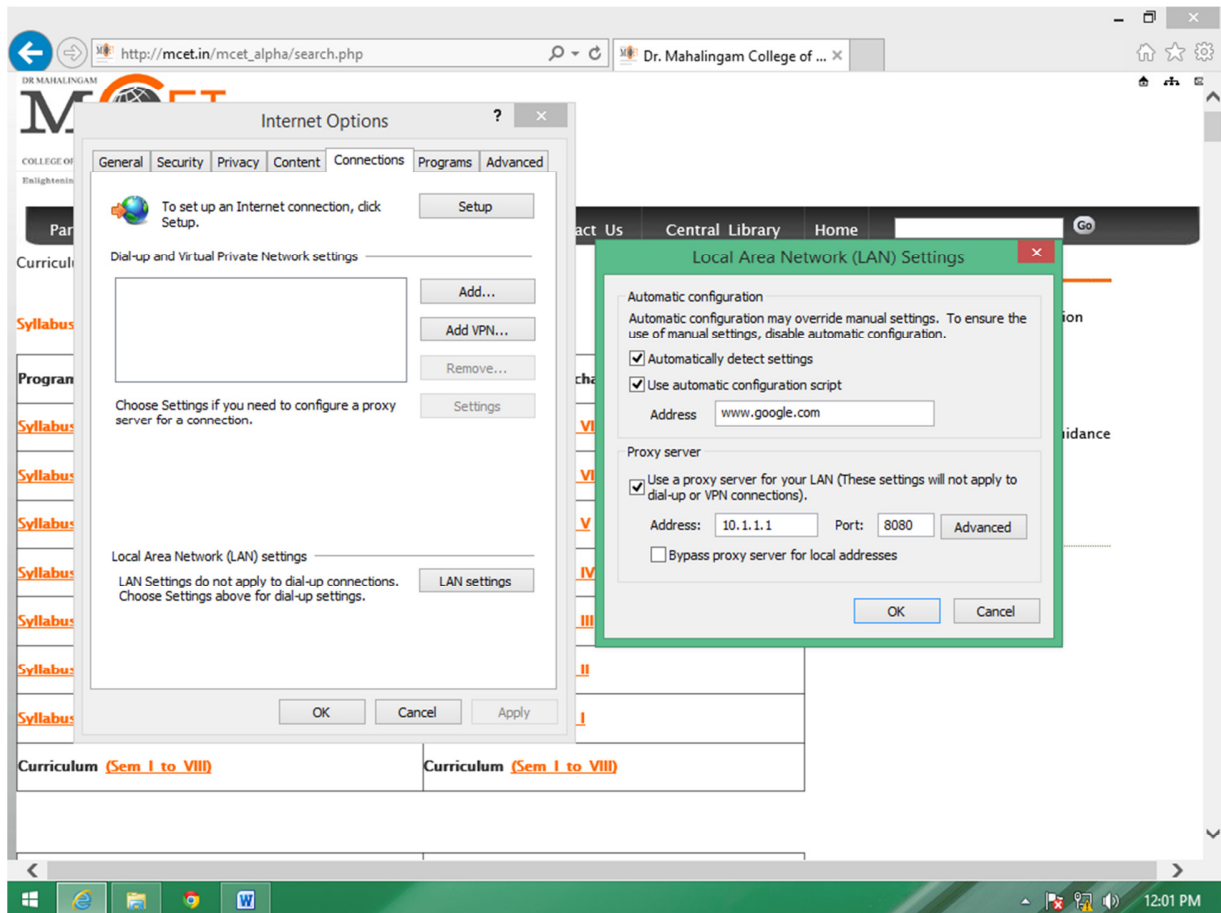
Step 2:

In the internet properties window select Connections Tab, in that select LAN settings button at bottom of pop up window.



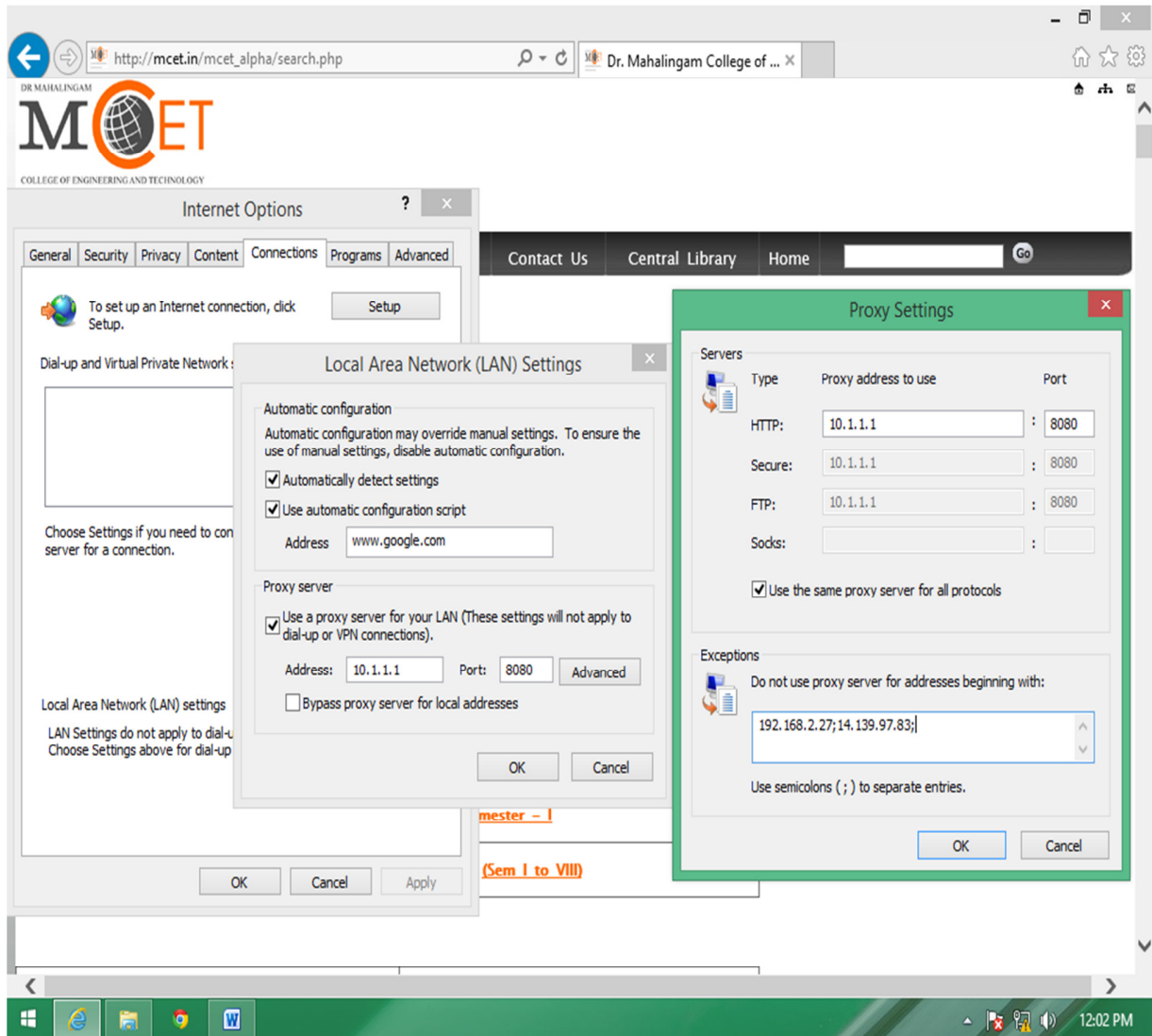
Step 3:

In this LAN Settings click the Advanced Button.



Step 4:

Select Advanced in the LAN settings window, it will pop-up Proxy Settings window.



Step 5:

In Exception Text Area add the following IP Address 192.168.2.160 followed by a semicolon, and press OK button.

