

PhD Scholars' Monthly Progress Review Report

July 2025

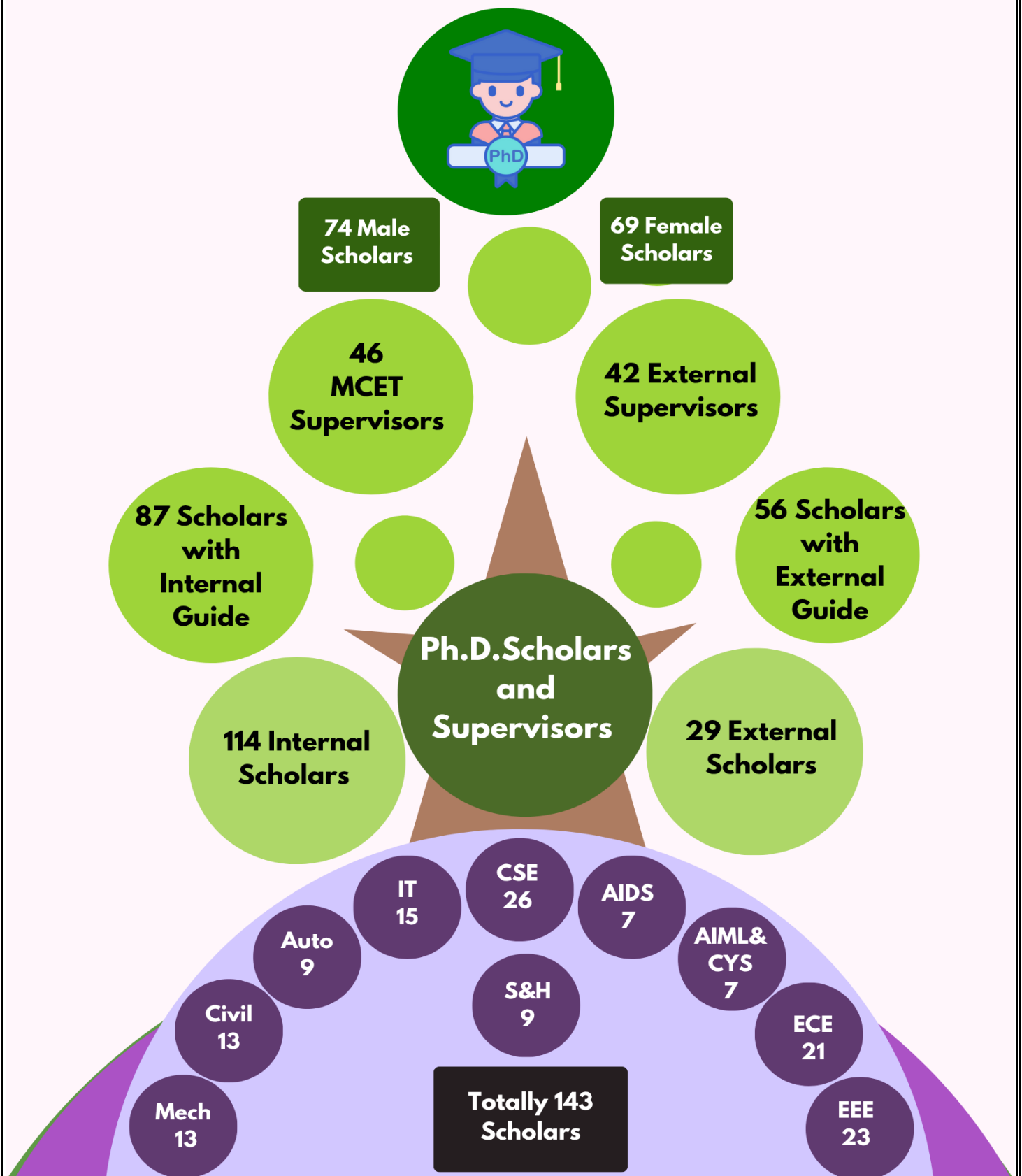


**Office of Dean
Research & Innovation**

Index

S.No.	Particulars	Page No.
1.	Number of Ph.D. Scholars and Supervisors	2
2.	Status of Ph.D. Scholars	3
3.	Review Parameters: A. Time spent for Ph.D. B. Doctoral Development Discussions C. Indexed Journal Paper Publications D. Patent Grants E. Funding & Consultancy Details	4
4.	Department wise Performance Analysis	11
5.	Top 10 Ph.D. Scholars in MCET-July 2025	13
6.	Department Toppers-July 2025	14

Number of Ph.D. Scholars and Supervisors



Status of Ph.D.

Totally 92 MCET Scholars reviewed-July 2025

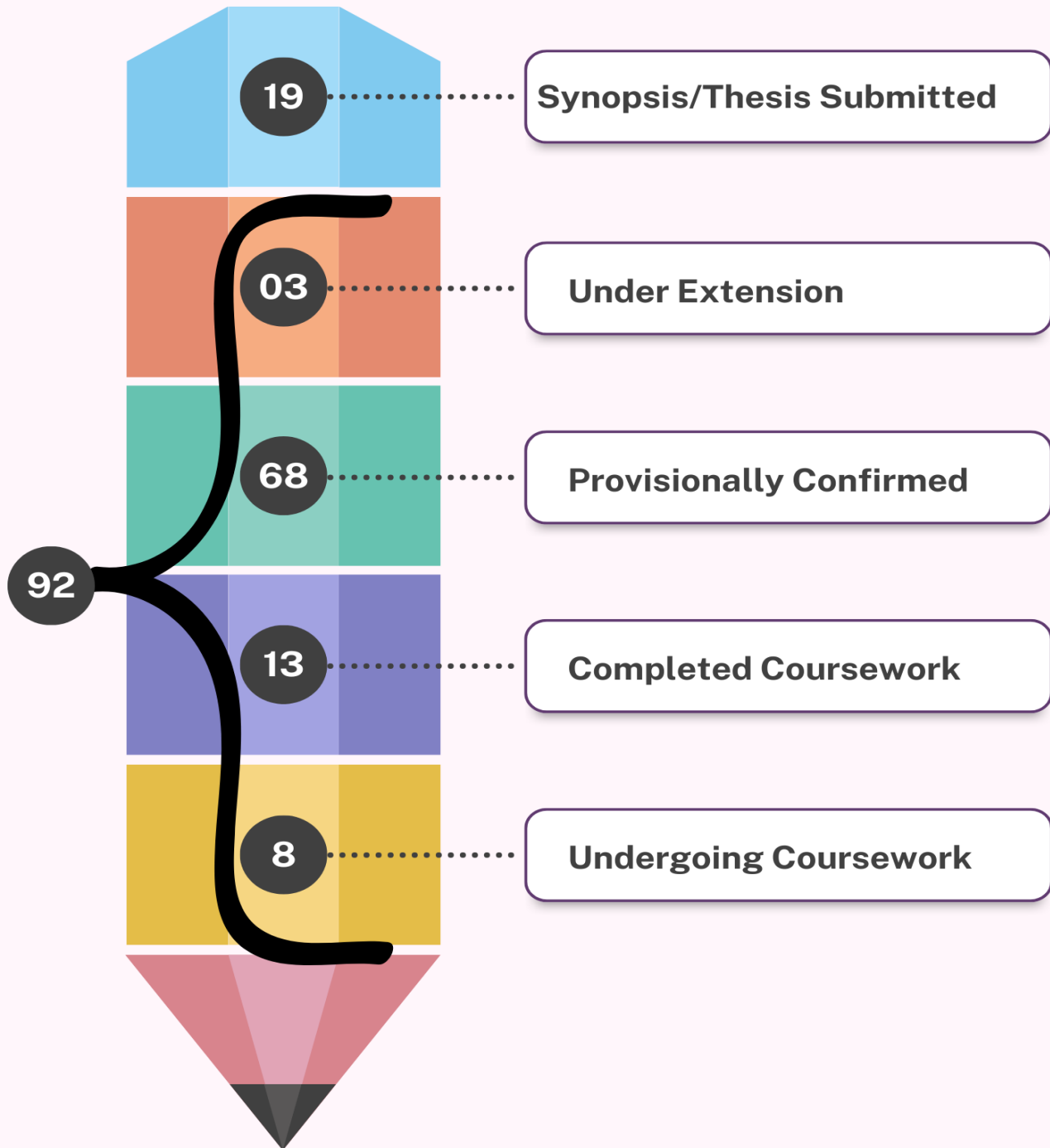


Table 1: Ph.D. scholars' Monthly Progress Review Parameters

Sl. No.	Category	Marks/Month	Max. Marks
1.	Time spent for Research (Entry in terms of week 1, week 2, week 3 & week 4)	20 Marks (40 hours in 4 weeks)	20
2.	Doctoral Development Discussions	Research Presentation:10 Research seminar:15 Research Tools-Hands-on:20	20
3.	Indexed Journal paper (Best 1 to be claimed) Research paper (in AU list)/ Other Indexed Journal publication (not in AU list)	Paper Submitted:5 Revision submitted:10 Rejected & resubmitted:15 Accepted (not in AU list):15 Accepted (AU list):20	20
4.	Patent Only patent (Design should not be considered)	Filed-5 Published-10 Responded to FER-15 Granted-20	20
5.	Funding & Consultancy	Proposal submitted (Active)/ Consultancy work initiated-10 Ongoing-15 Completed-20	20
Total			100

Review Parameters

A. Time Spent for Ph.D.

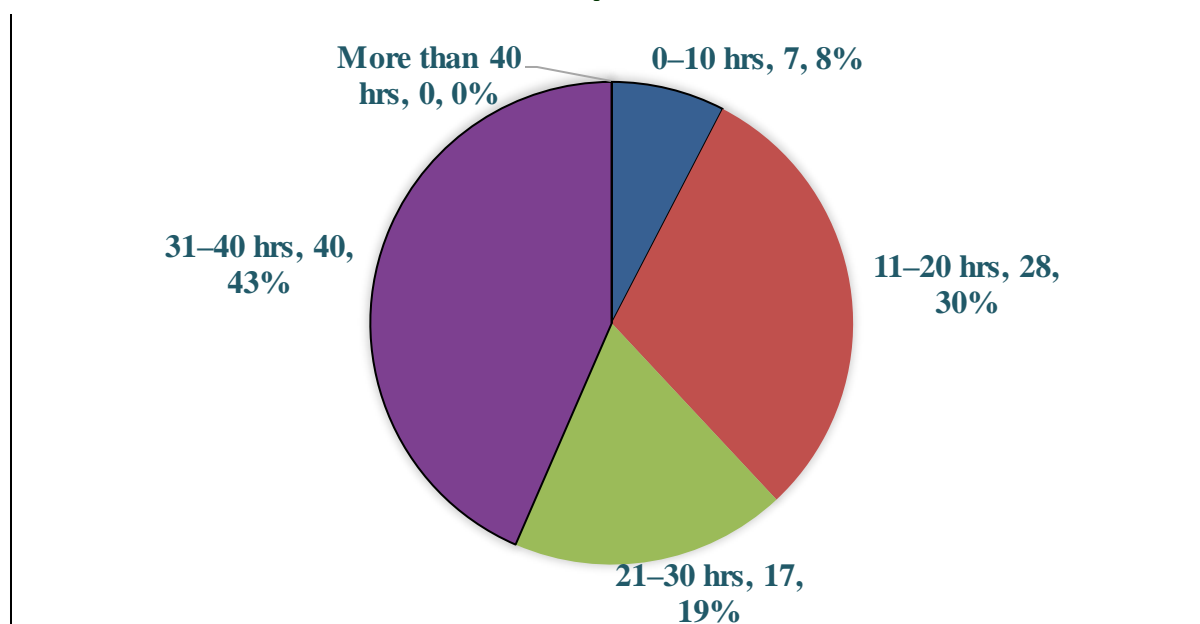


Figure 1: Time spent for Research

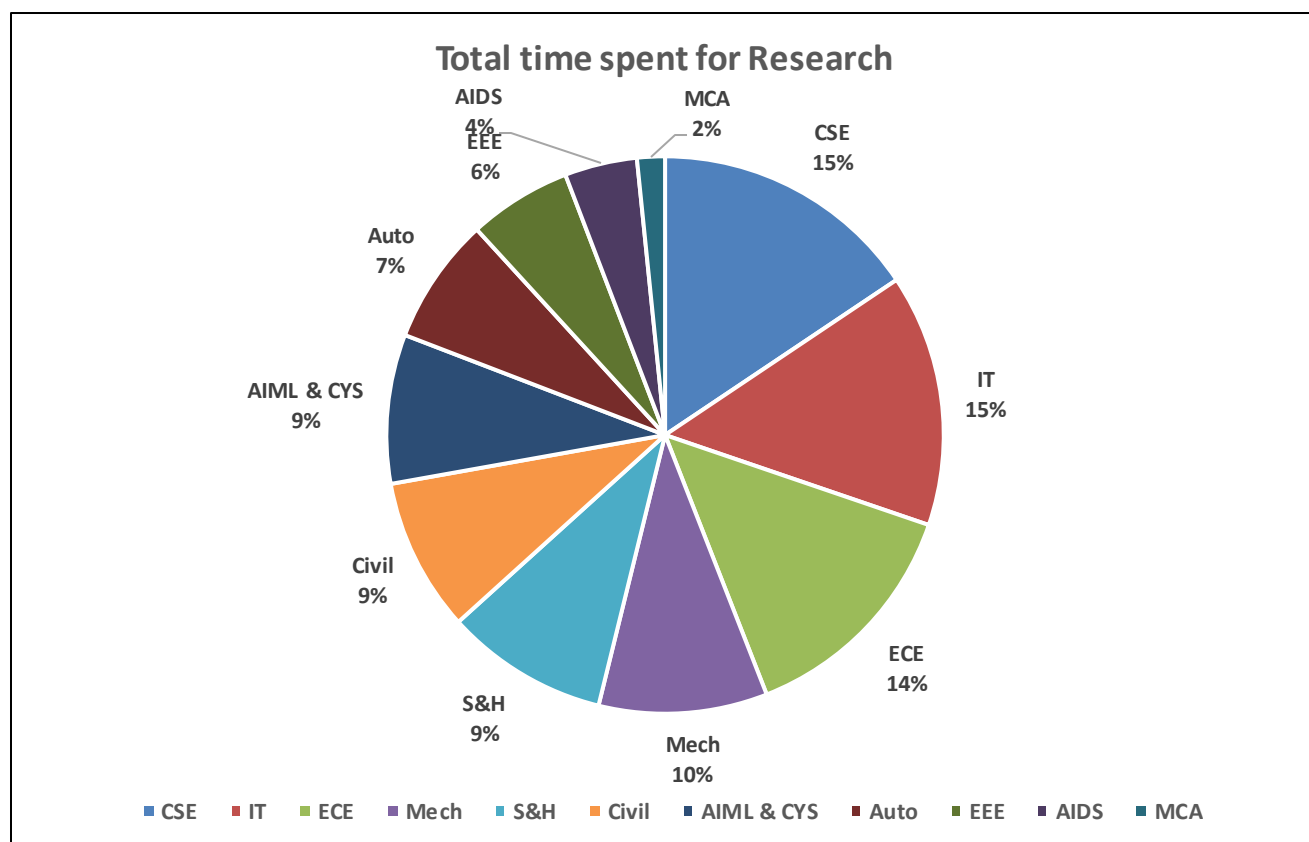


Figure 2: Department wise contribution to total Research time

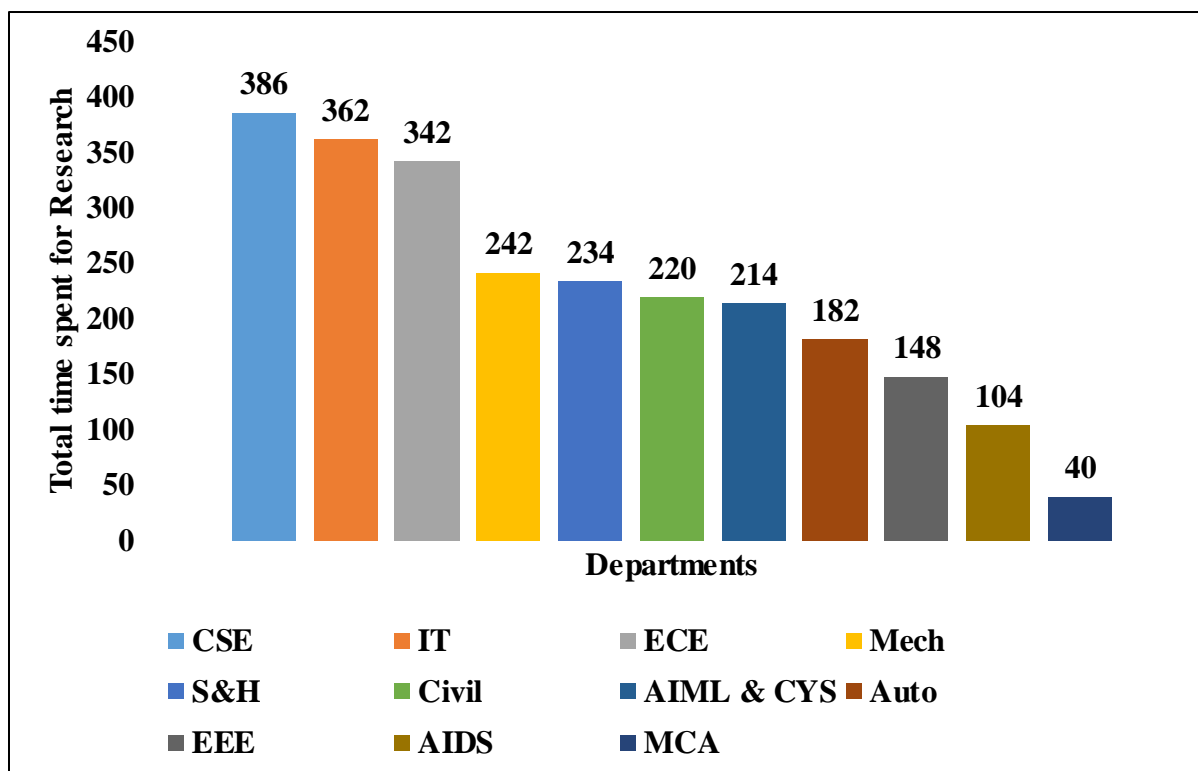


Figure 3: Department wise time spent by scholars for Research

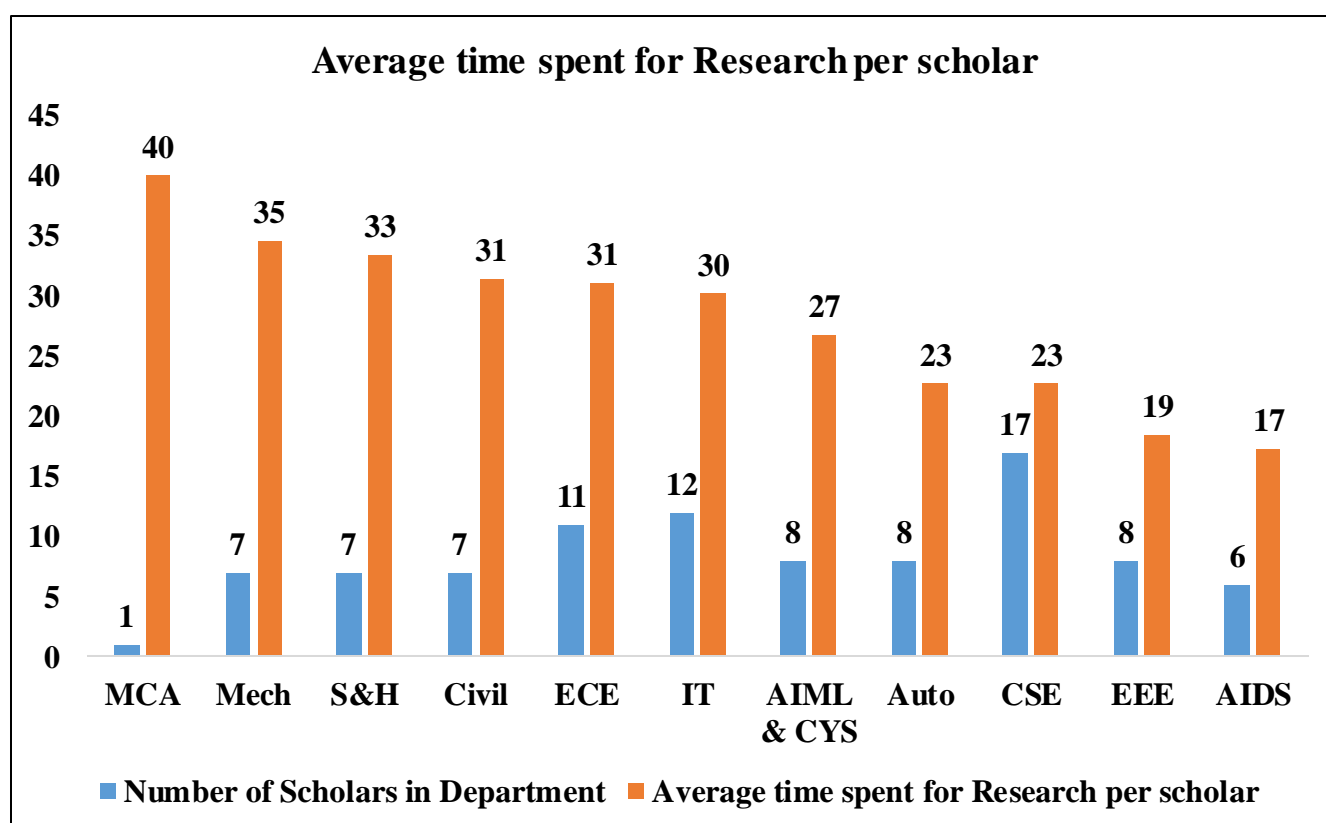


Figure 4: Department wise No. of Scholars and Average time spent for Research per Scholar

B. Doctoral Development Discussions

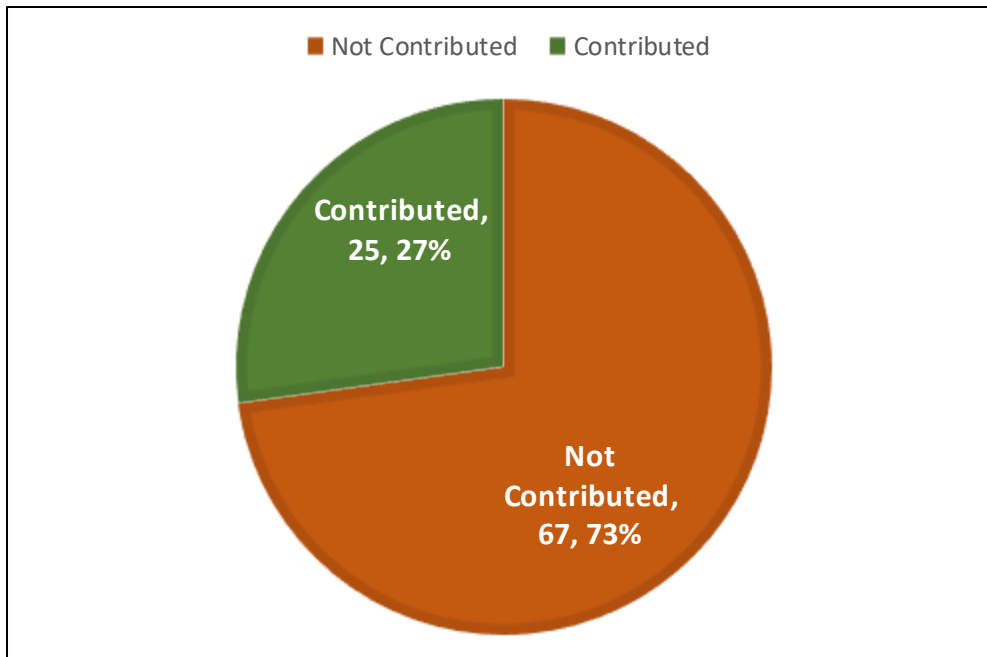


Figure 5: Number of Scholars Contributed Vs Not Contributed in Doctoral Development Discussions

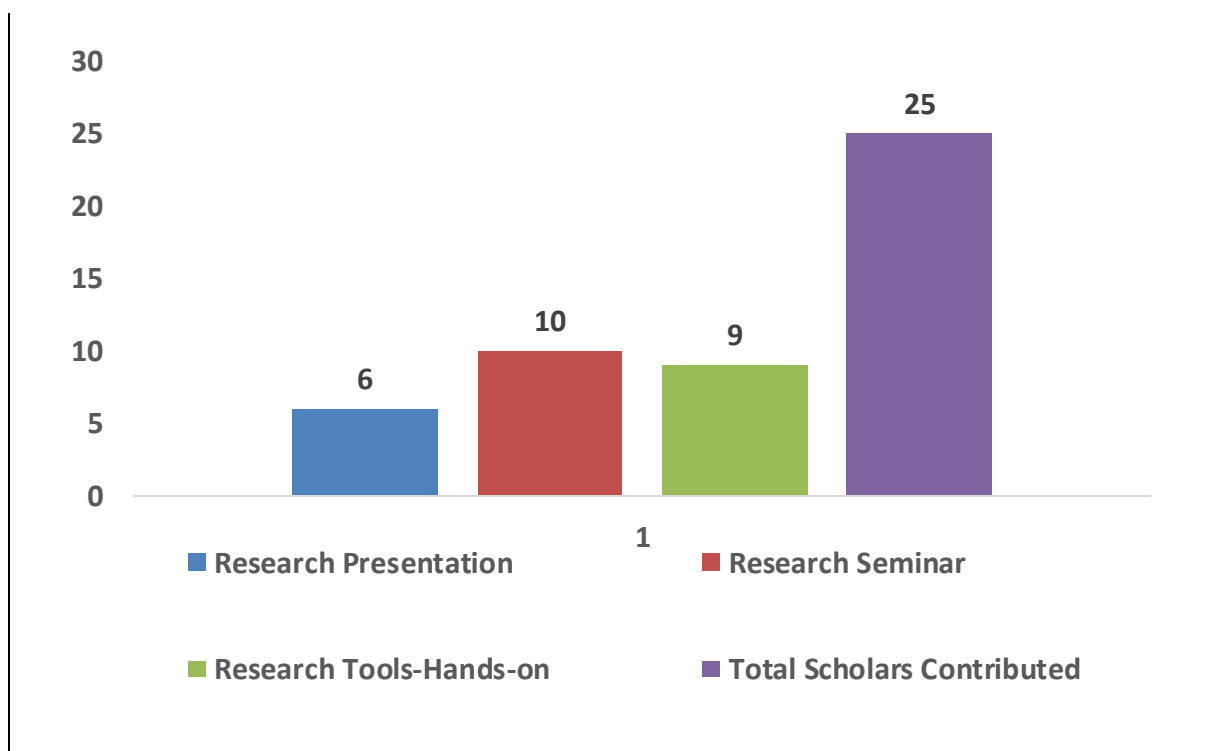


Figure 6: Distribution of Scholars based on Doctoral Development Discussions

C. Indexed Journal Paper Publications

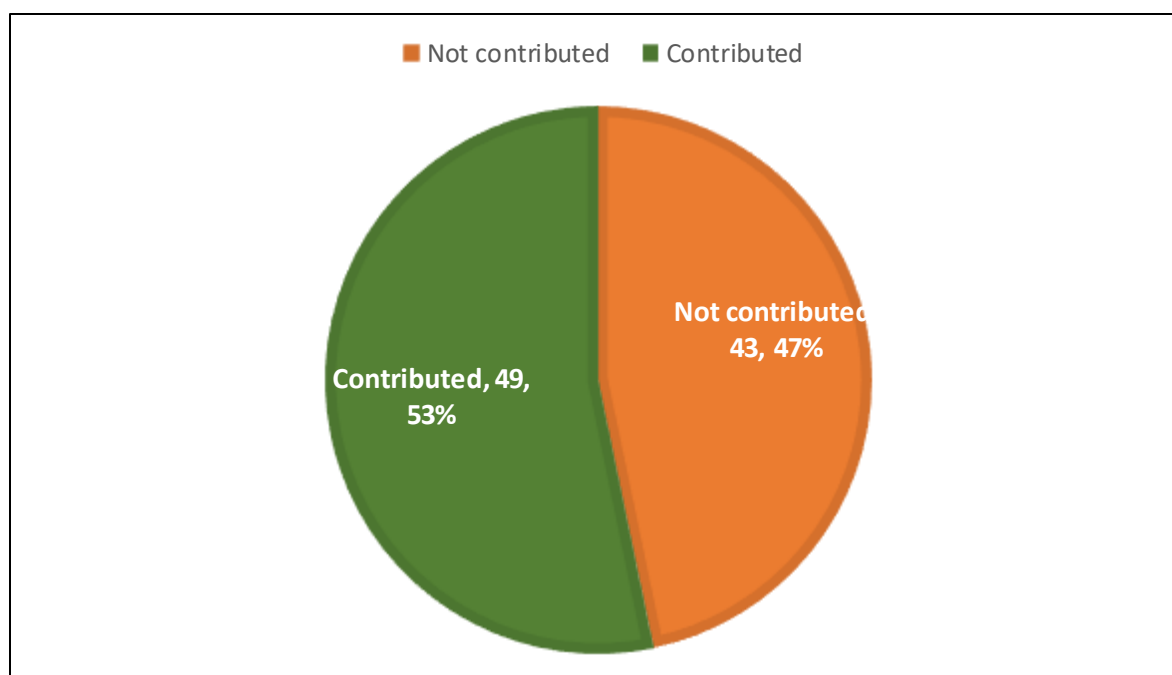


Figure 7: Number of Scholars Contributed Vs Not Contributed in Indexed Journal Paper

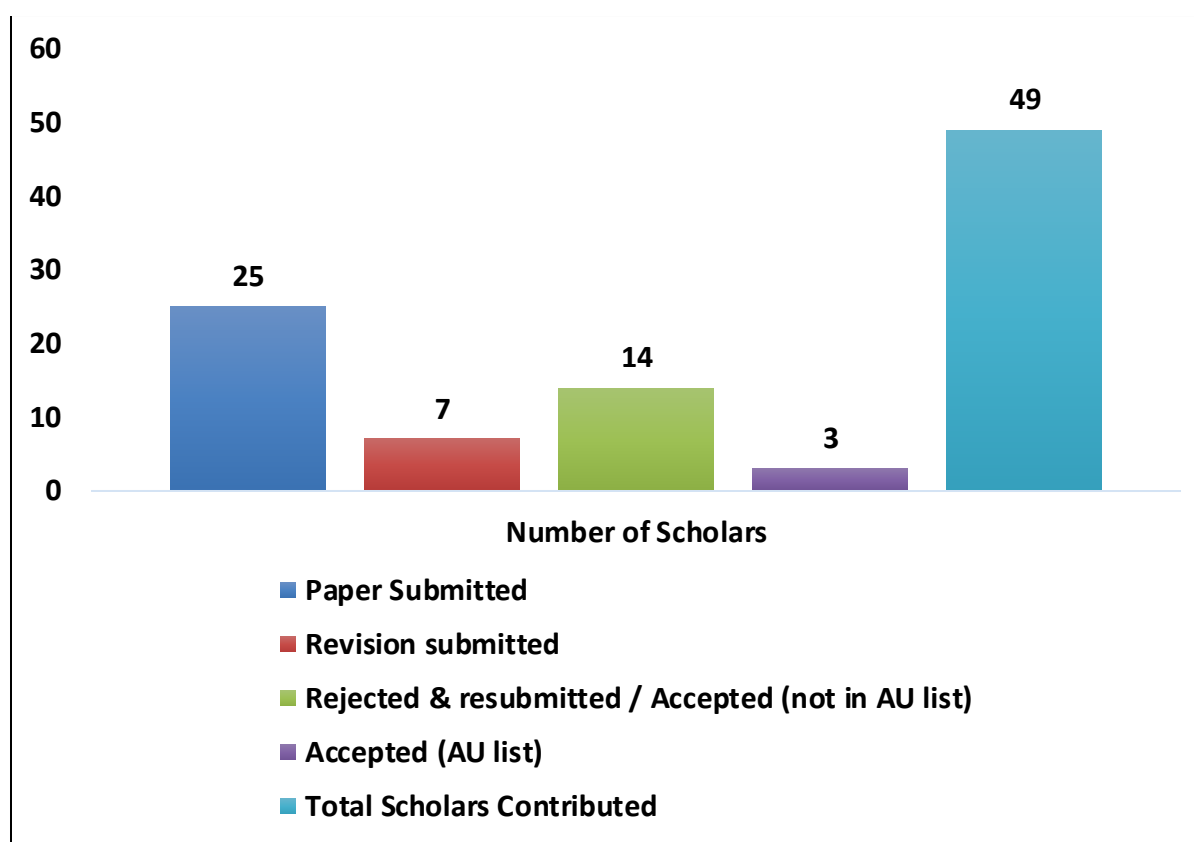


Figure 8: Distribution of Scholars based on Indexed Journal Paper

D. Patent Grants

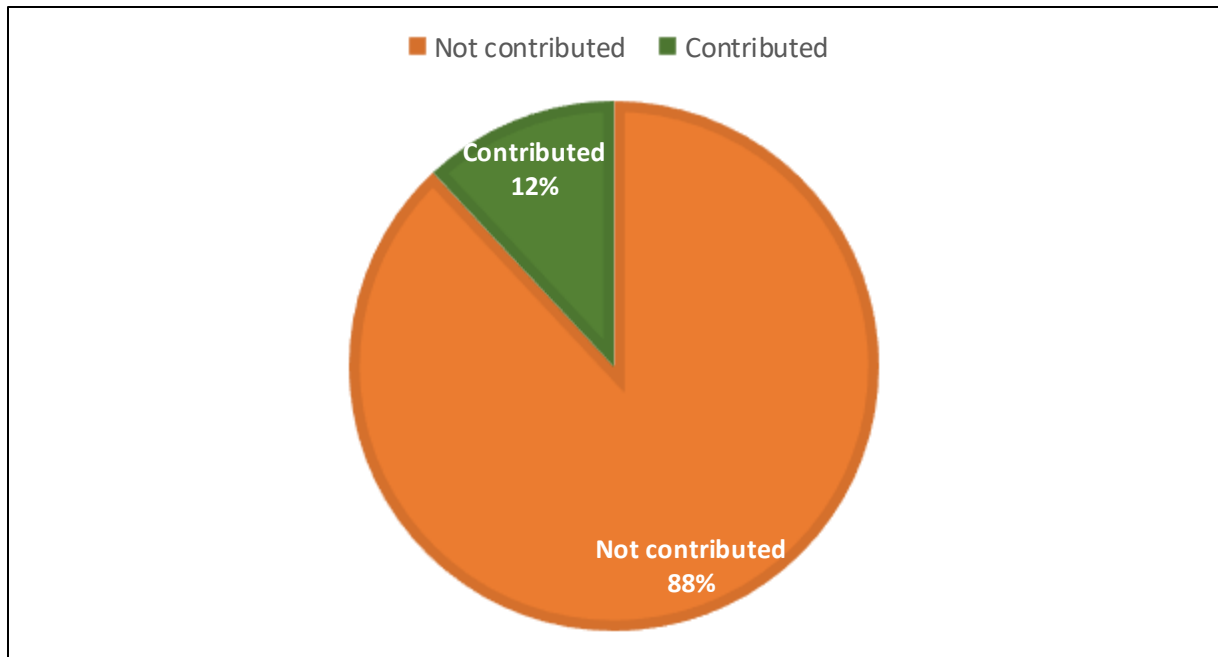


Figure 9: Number of Scholars Contributed Vs Not Contributed in Patent Grants

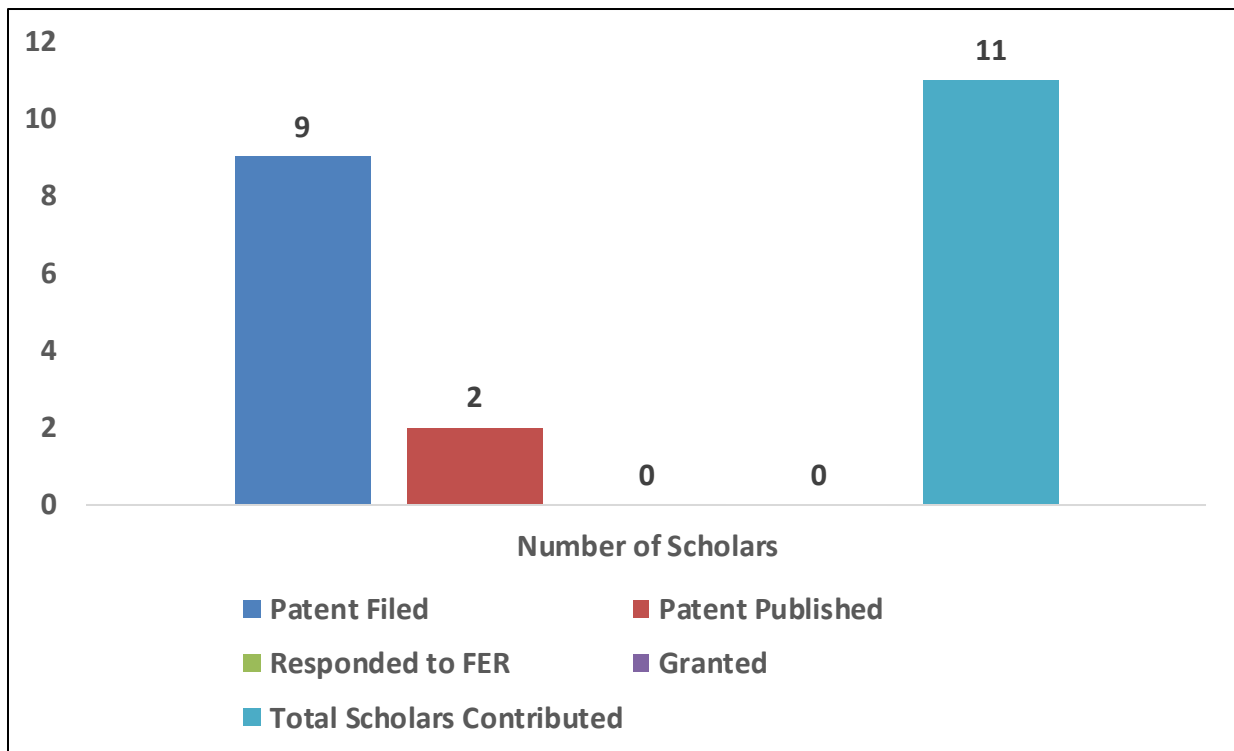


Figure 10: Distribution of Scholars based on Patent grants

E. Funding & Consultancy Details

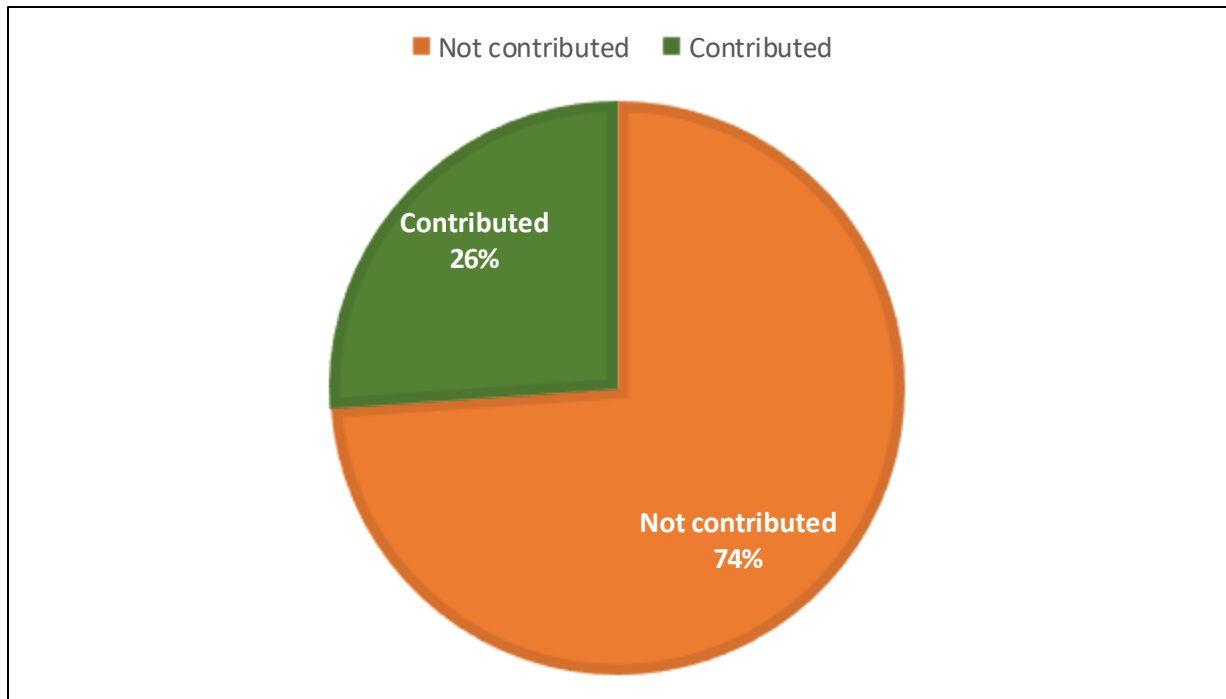


Figure 11: Number of Scholars Contributed Vs Not Contributed in Funding & Consultancy

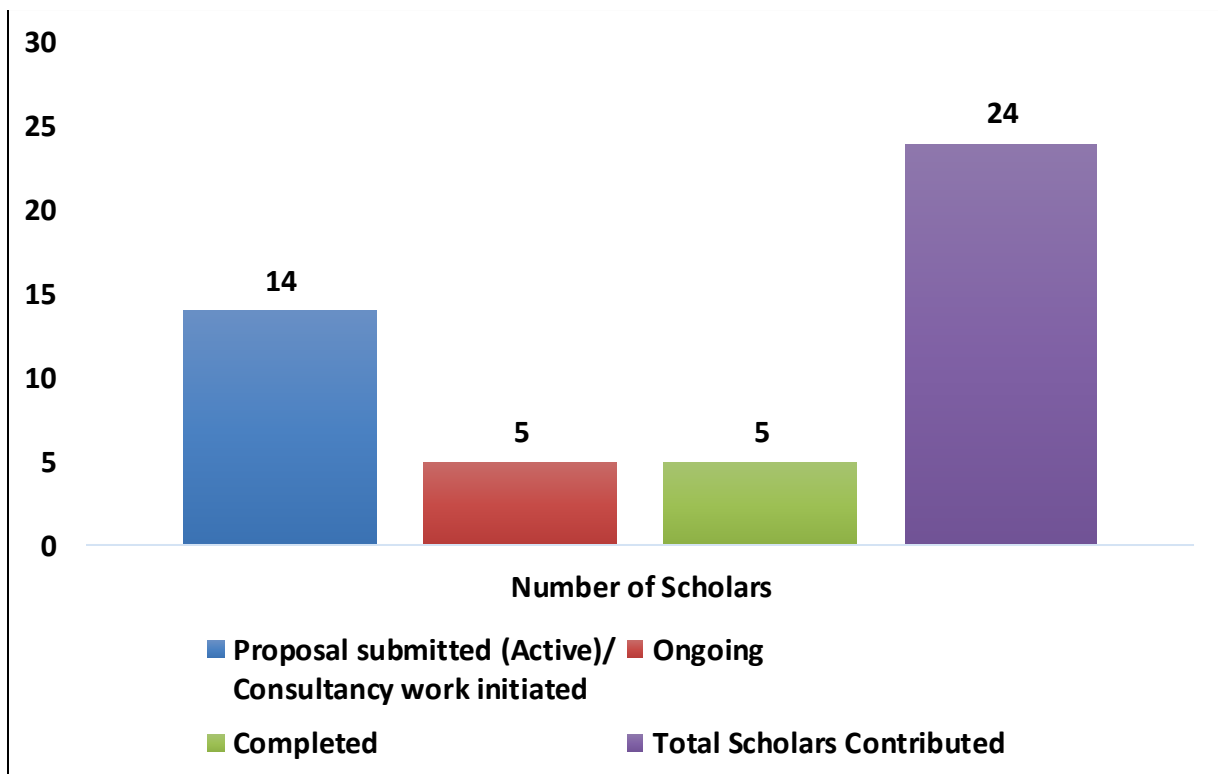


Figure 12: Distribution of Scholars based on Funding & Consultancy

Department wise Performance Analysis

Table 2: Department wise Average Scores-July 2025

Departments	Average Points Earned					Average Overall Score
	A. Time spent for Ph.D.	B. Doctoral Development Discussions	C. Indexed paper publications	D. Patent Grants	E. Funding and Consultancy Activities	
S&H	17	11	7	0	6	41
Mech	17	5	6	1	7	37
Civil	16	2	5	0	9	32
ECE	16	4	9	0	3	31
Auto	11	4	6	2	6	29
AIML & CYS	13	9	4	1	2	28
EEE	9	6	7	0	3	25
CSE	11	2	6	1	2	22
AIDS	9	6	3	3	2	21
MCA	20	0	0	0	0	20
IT	15	0	0	0	0	16

Department wise Performance Analysis - HeatMap Representation

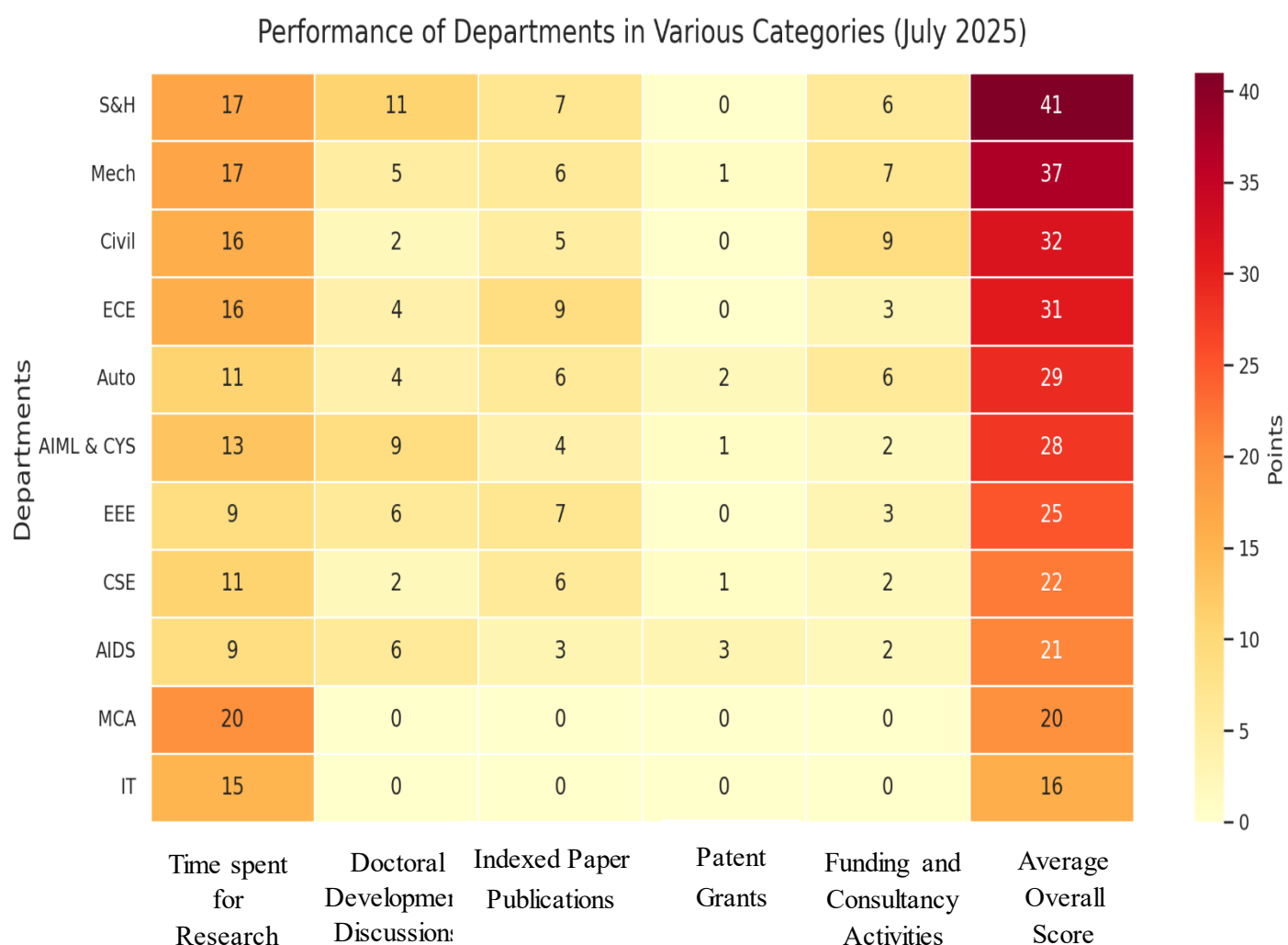


Figure 13: Department wise Average Scores – July 2025

Table 3: Top 10 Ph.D. Scholars in MCET - July 2025

S.No.	Name & Dept. of the Scholar	A	B	C	D	E	Score * (out of 100)
1.	Mr.T.Selvakumar, AI&ML	9	15	20	0	15	59
2.	Ms.V.Arunadevi, S&H	12	10	15	0	20	57
3.	Mr.C.Radhakrishnan, Auto	11	20	5	5	15	56
4.	Ms.N.Punitha, S&H	20	20	15	0	0	55
5.	Ms.R.Anuja, Civil	20	15	0	0	20	55
6.	Mr. Sreejith S Nair, Mech	20	10	15	0	10	55
7.	Mr.S.Dineshkumar, Civil	20	0	15	0	20	55
8.	Mr.J.Dinesh Kumar, Auto	20	0	20	10	0	50
9.	Mr.S.Naveen Kumar, Mech	13	15	5	5	10	48
10.	Ms.P.Vanjpriya, ECE	12	20	5	0	10	47
11.	Ms.K.Rajalakshmi, S&H	7	20	0	0	20	47

*Scores are based on the data provided by the Scholars

*A. Time spent for Ph.D.
B. Doctoral Development Discussions
C. Indexed paper publications
D. Patent Grants
E. Funding and Consultancy Activities*

Table 4: Department Toppers - July 2025

S.No.	Name & Dept. of the Scholar	A	B	C	D	E	Score * (out of 100)
1.	Mr.T.Selvakumar, AI&ML	9	15	20	0	15	59
2.	Ms.V.Arunadevi, S&H	12	10	15	0	20	57
3.	Mr.C.Radhakrishnan, Auto	11	20	5	5	15	56
4.	Ms.R.Anuja, Civil	20	15	0	0	20	55
5.	Mr.Sreejith S Nair, Mech	20	10	15	0	10	55
6.	Ms.P.Vanji priya, ECE	12	20	5	0	10	47
7.	Mr.M.Prabhu Raj, EEE	9	10	5	0	20	44
8.	Ms.G.Deepa, CSE	12	15	15	0	0	42
9.	Ms.S.R.Indurekaa, AI&DS	19	15	5	0	0	39
10.	Ms.T.Sumathi, IT	20	0	5	0	0	25
11.	Ms.K.C.Theepika, MCA	20	0	0	0	0	20

*Scores are based on the data provided by the Scholars

*A. Time spent for Ph.D.
B. Doctoral Development Discussions
C. Indexed paper publications
D. Patent Grants
E. Funding and Consultancy Activities*



Office of Dean Research and Innovation

Dr. Mahalingam College of Engineering and Technology,
Pollachi – 642003

Web: <https://drmcet.ac.in/research-centres-supervisors/>

Email: deanri@drmcet.ac.in