

# PhD Scholars' Monthly Progress Review Report

*June 2025*

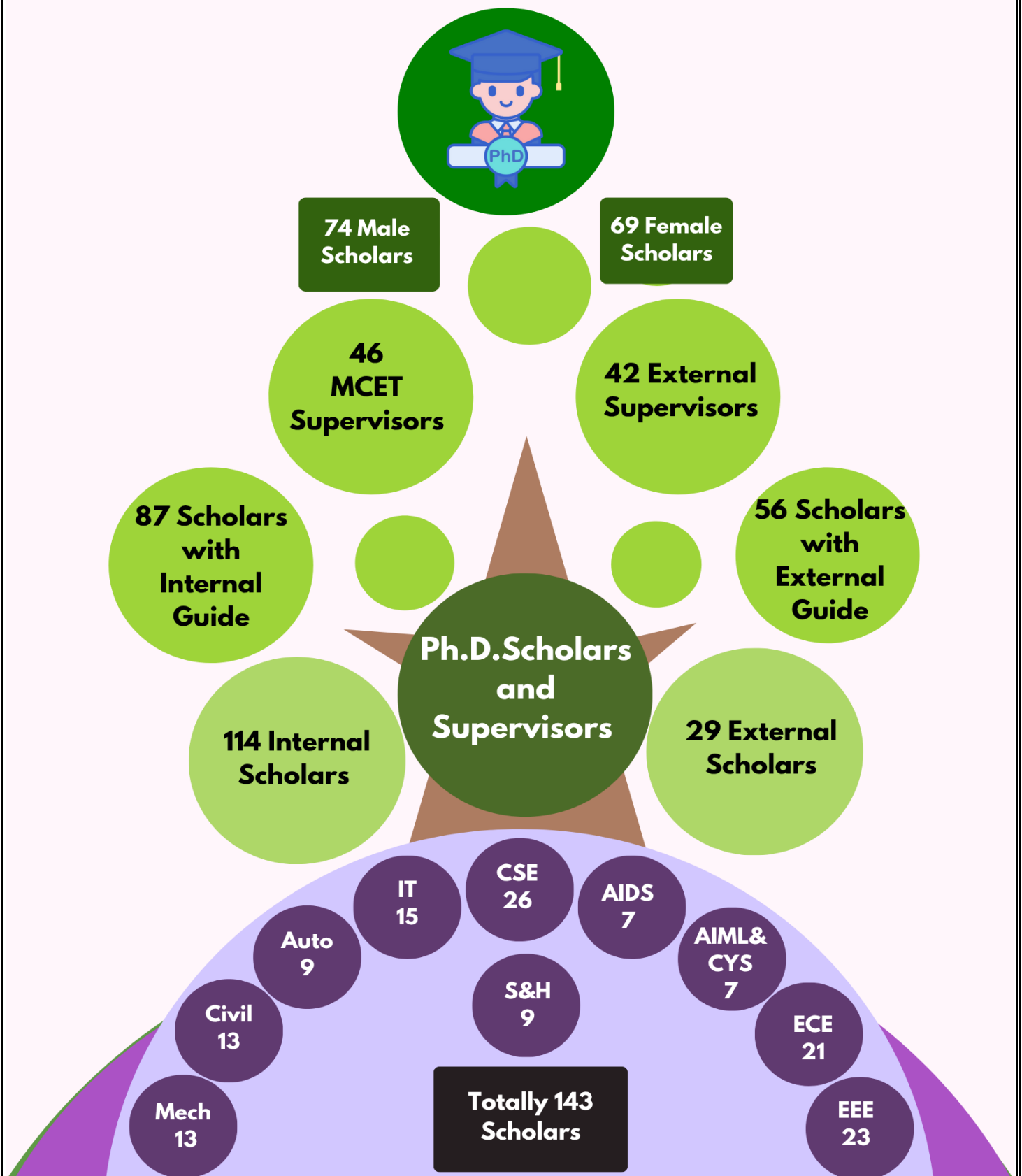


**Office of Dean  
Research & Innovation**

# Index

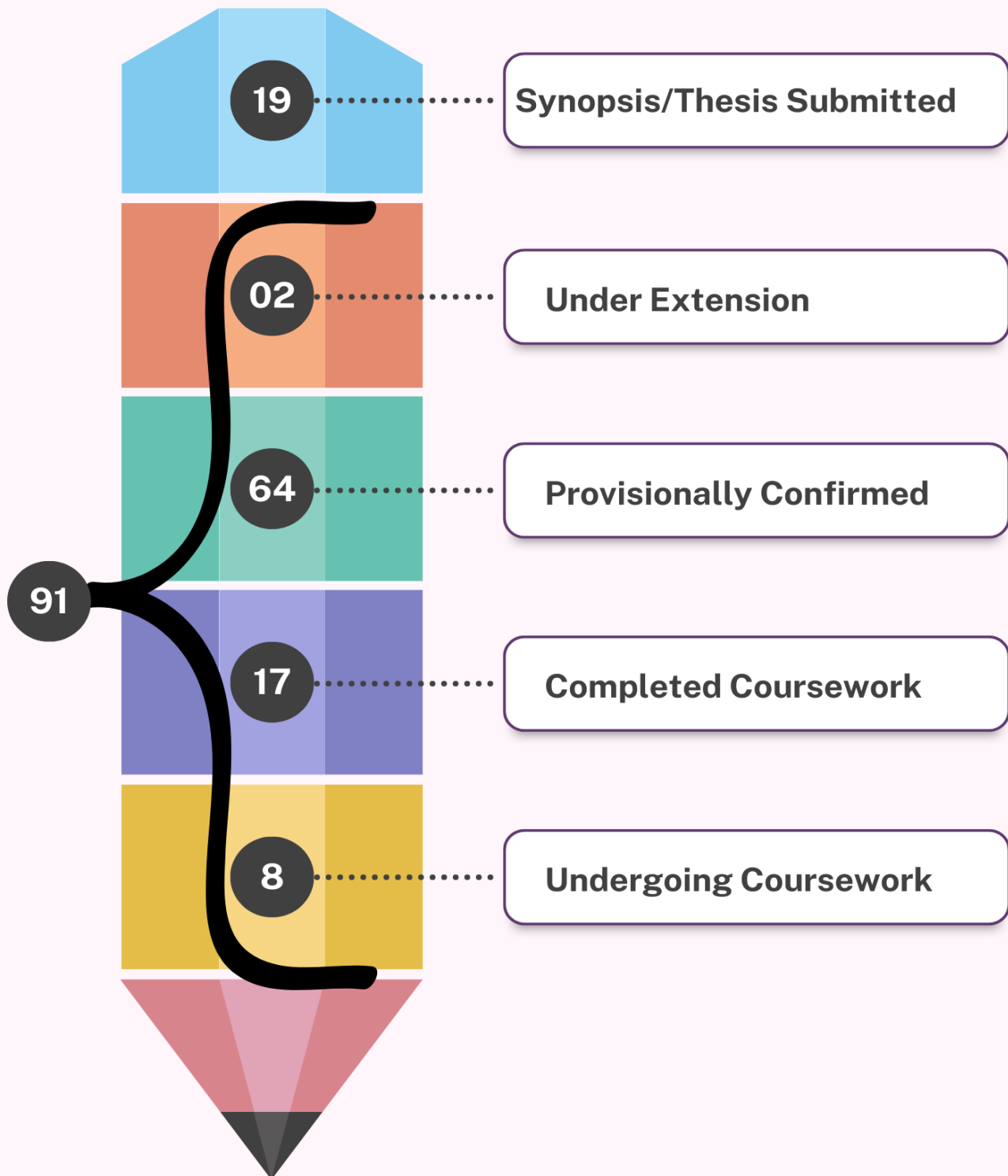
S.No.	Particulars	Page No.
<b>1.</b>	<b>Number of Ph.D. Scholars and Supervisors</b>	<b>2</b>
<b>2.</b>	<b>Status of Ph.D. Scholars</b>	<b>3</b>
<b>3.</b>	<b>Review Parameters:</b> A. Time spent for Ph.D. B. Doctoral Development Discussions C. Indexed Journal Paper Publications D. Patent Grants E. Funding & Consultancy Details	<b>4</b>
<b>4.</b>	<b>Department wise Performance Analysis</b>	<b>11</b>
<b>5.</b>	<b>Top 10 Ph.D. Scholars in MCET-June 2025</b>	<b>13</b>
<b>6.</b>	<b>Department Toppers-June 2025</b>	<b>14</b>

# Number of Ph.D. Scholars and Supervisors



# Status of Ph.D.

Totally 91 MCET Scholars reviewed-June 2025



**Table 1: Ph.D. scholars' Monthly Progress Review Parameters**

Sl. No.	Category	Marks/Month	Max. Marks
1.	Time spent for Research (Entry in terms of week 1, week 2, week 3 & week 4)	20 Marks (40 hours in 4 weeks)	20
2.	Doctoral Development Discussions	Research Presentation:10 Research seminar:15 Research Tools-Hands-on:20	20
3.	Indexed Journal paper (Best 1 to be claimed) Research paper (in AU list)/ Other Indexed Journal publication (not in AU list)	Paper Submitted:5 Revision submitted:10 Rejected & resubmitted:15 Accepted (not in AU list):15 Accepted (AU list):20	20
4.	Patent Only patent (Design should not be considered)	Filed-5 Published-10 Responded to FER-15 Granted-20	20
5.	Funding & Consultancy	Proposal submitted (Active)/ Consultancy work initiated-10 Ongoing-15 Completed-20	20
<b>Total</b>			<b>100</b>

# Review Parameters

## A. Time Spent for Ph.D.

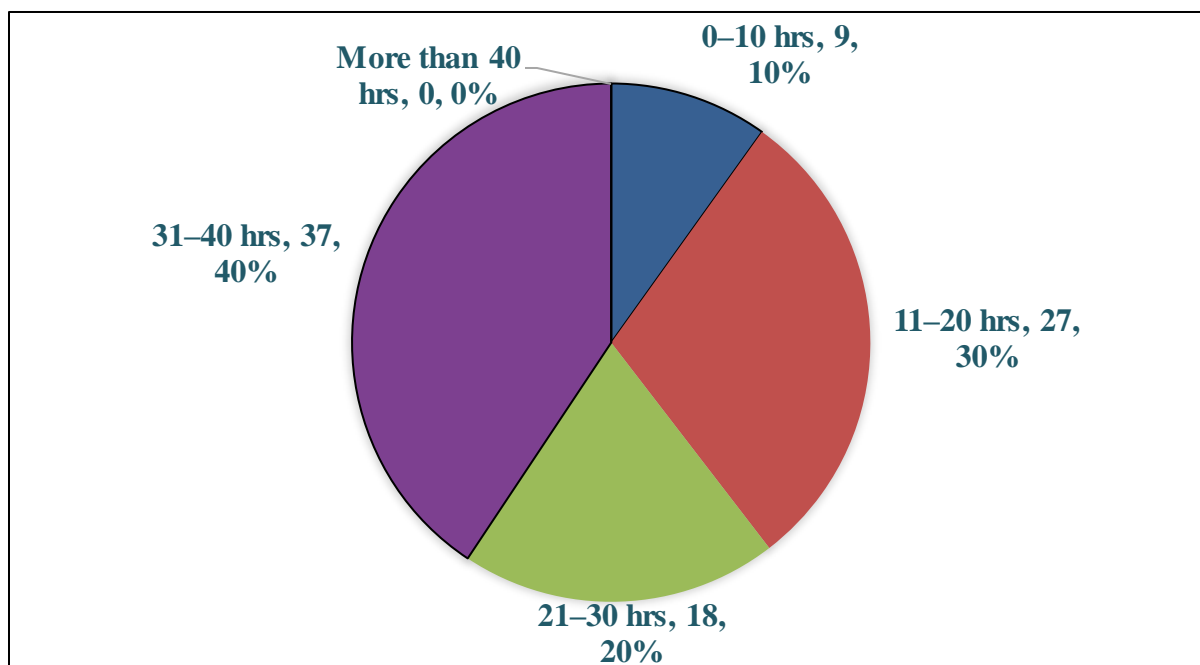


Figure 1: Time spent for Research

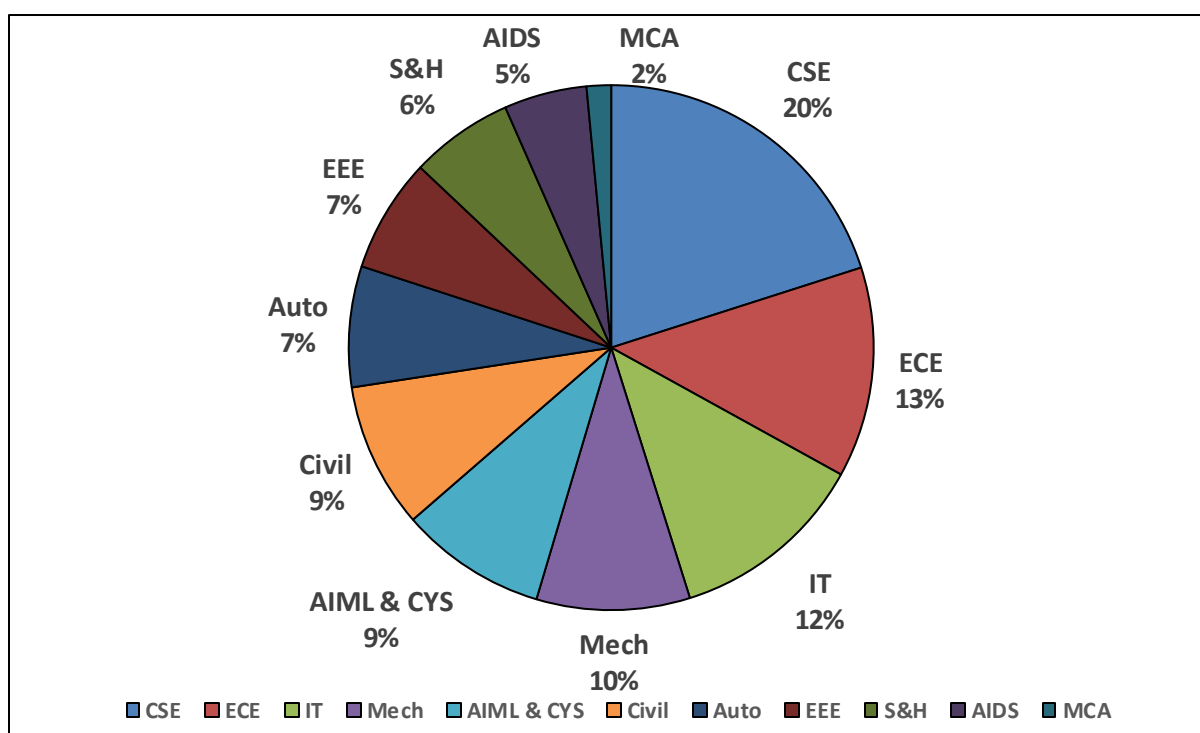
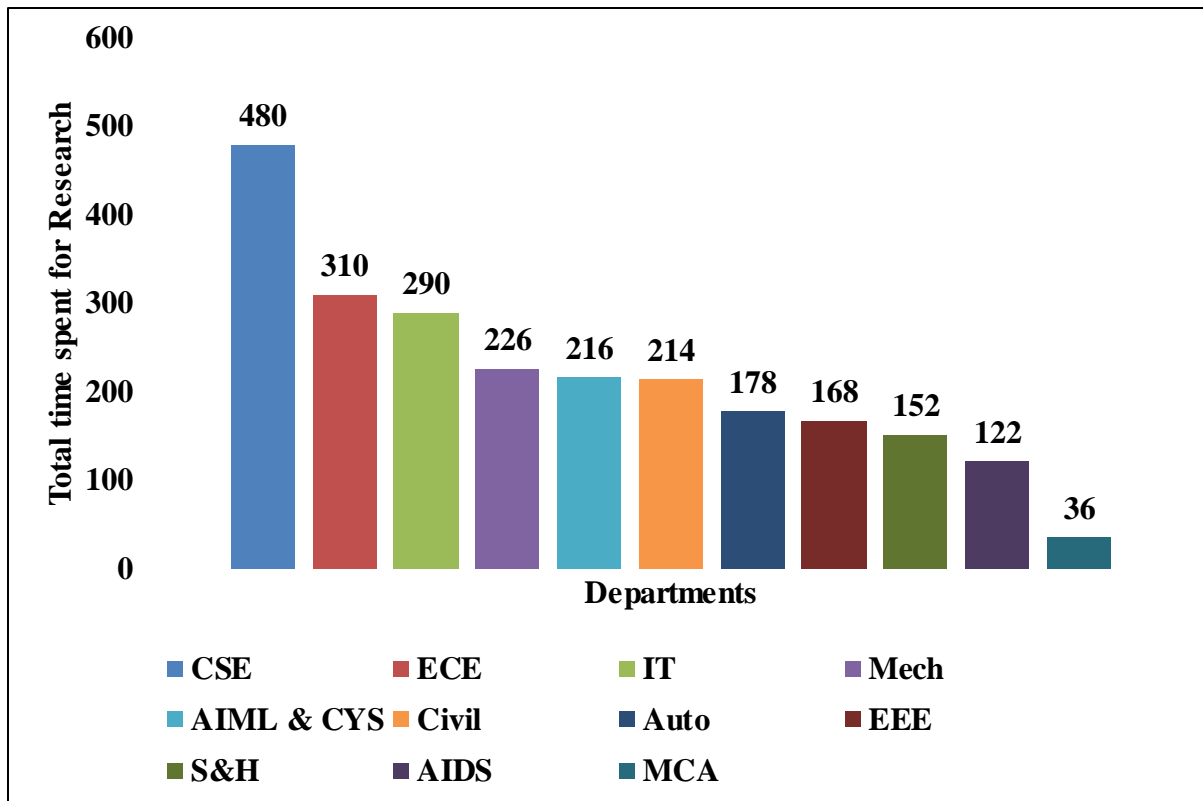
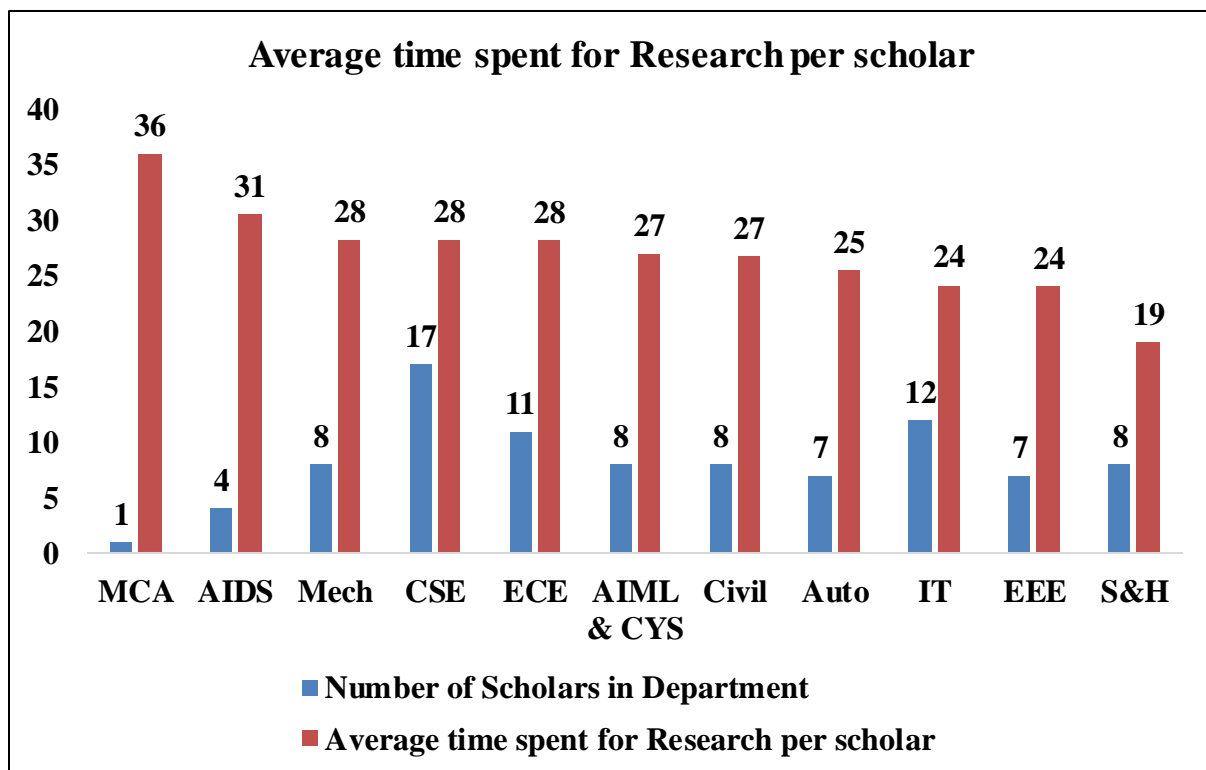


Figure 2: Department wise contribution to total Research time

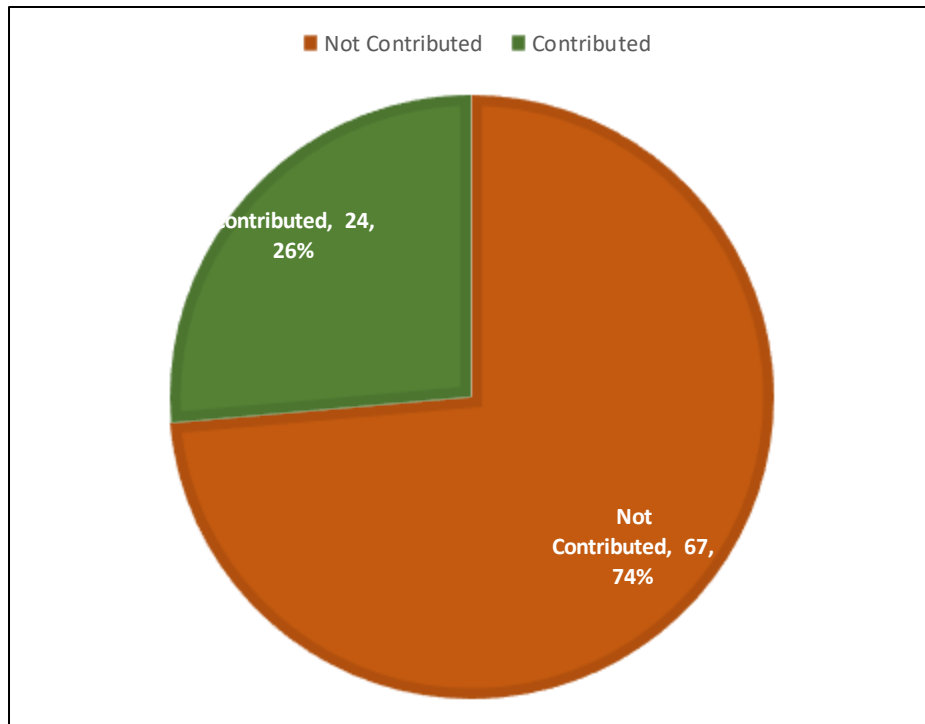


**Figure 3: Department wise time spent by scholars for Research**

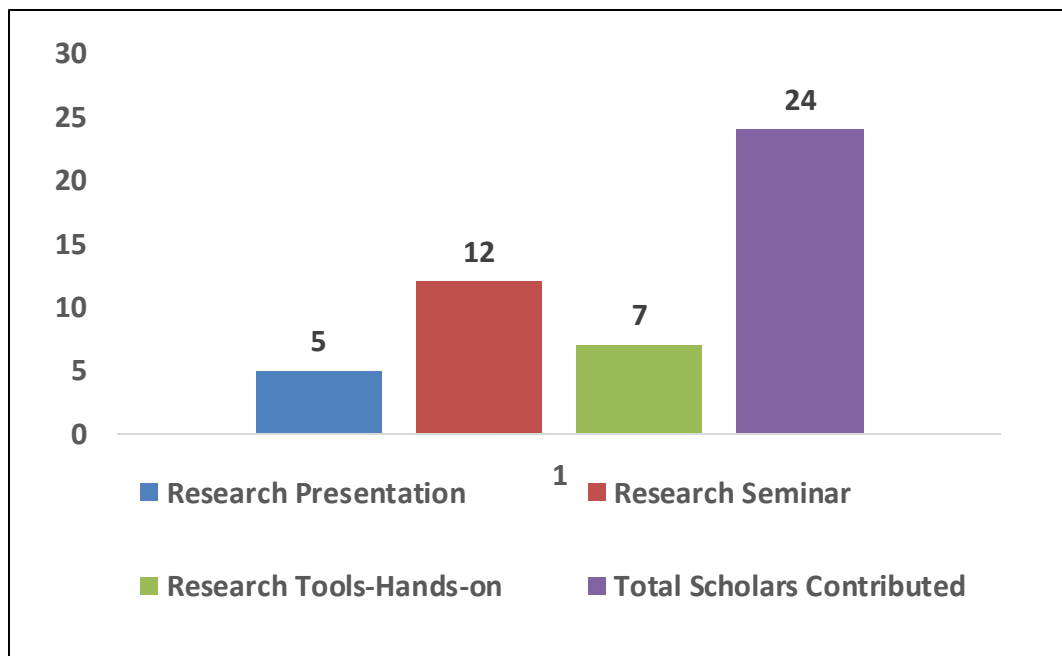


**Figure 4: Department wise No. of Scholars and Average time spent for Research per Scholar**

## B. Doctoral Development Discussions



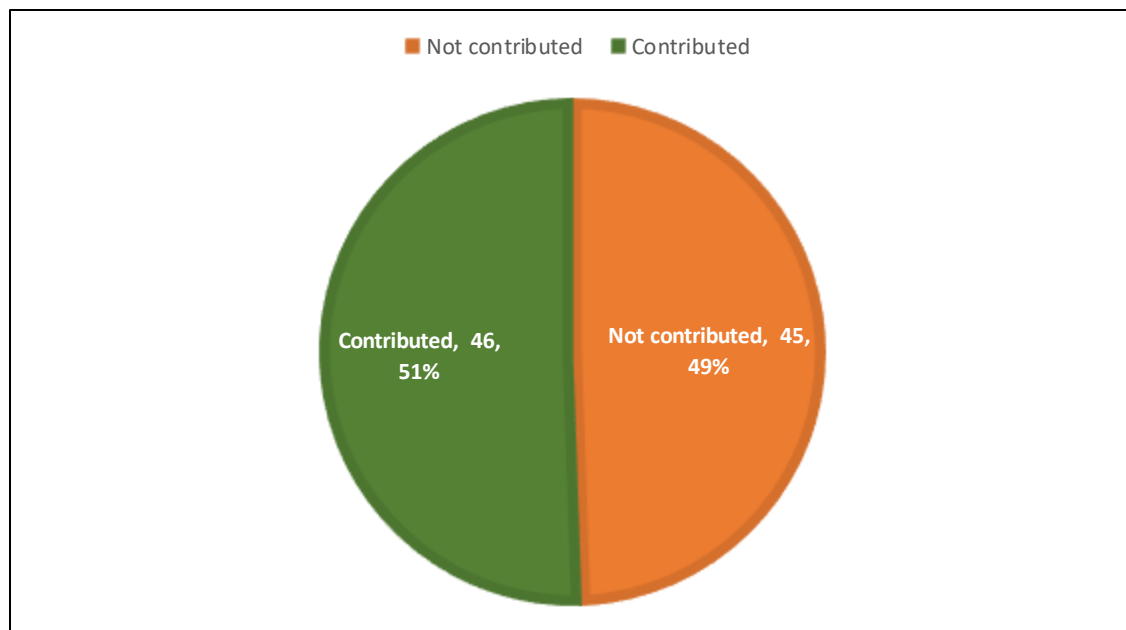
**Figure 5: Number of Scholars Contributed Vs Not Contributed in Doctoral Development Discussions**



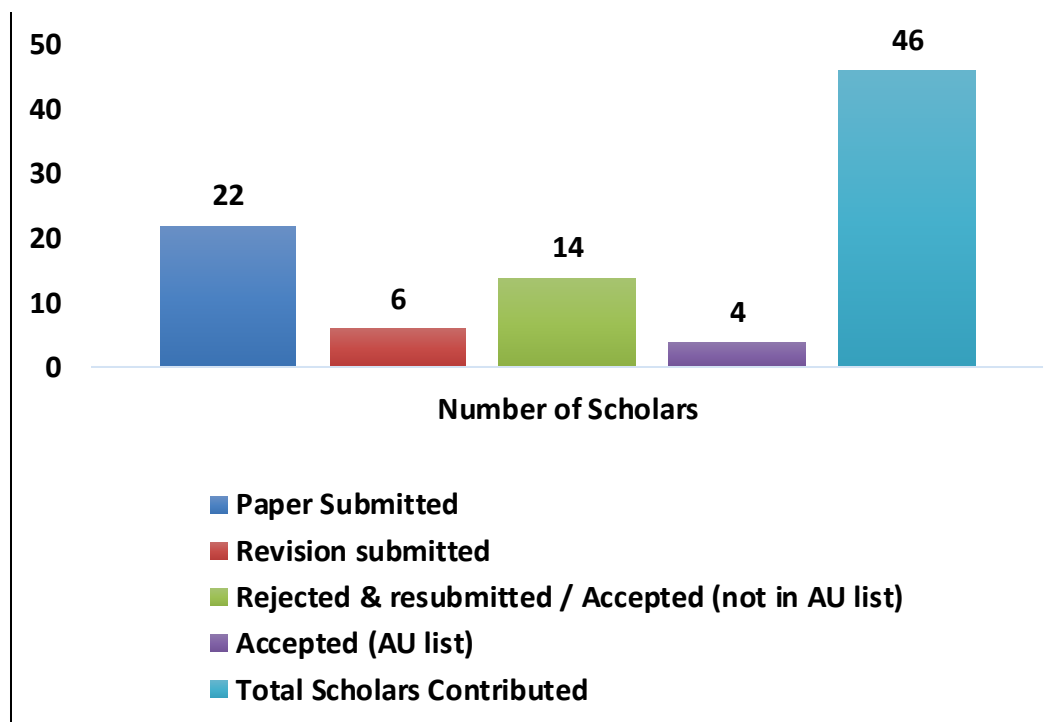
**Figure 6: Distribution of Scholars based on Doctoral Development Discussions**



## C. Indexed Journal Paper Publications

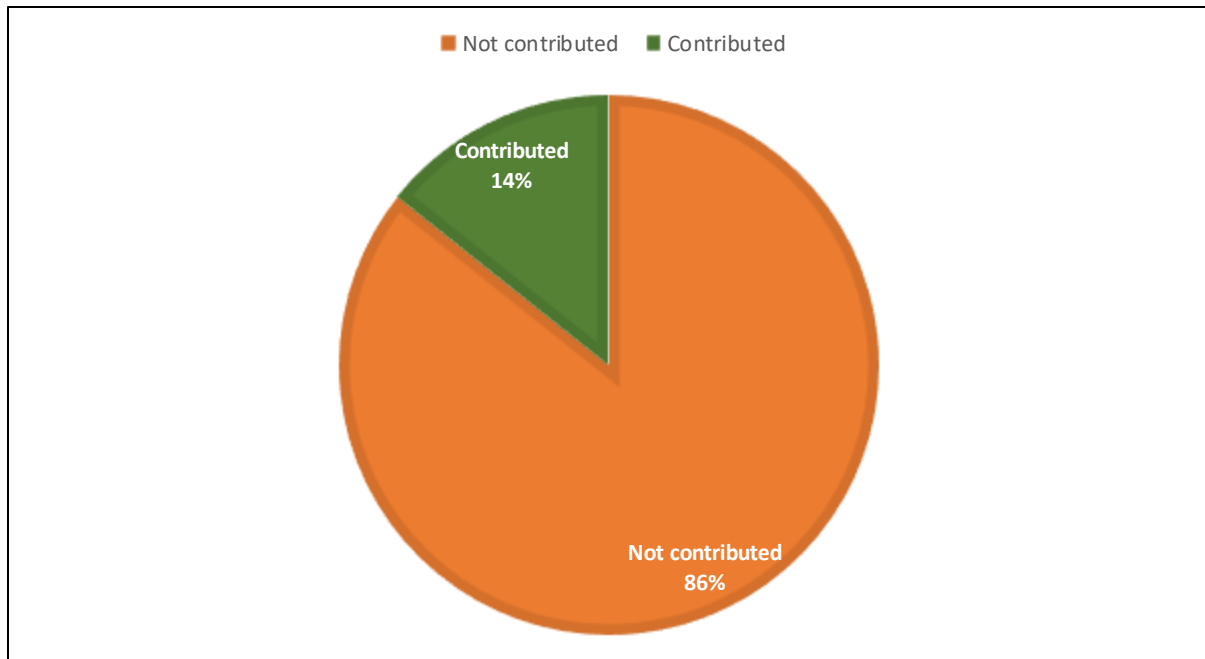


**Figure 7: Number of Scholars Contributed Vs Not Contributed in Indexed Journal Paper**

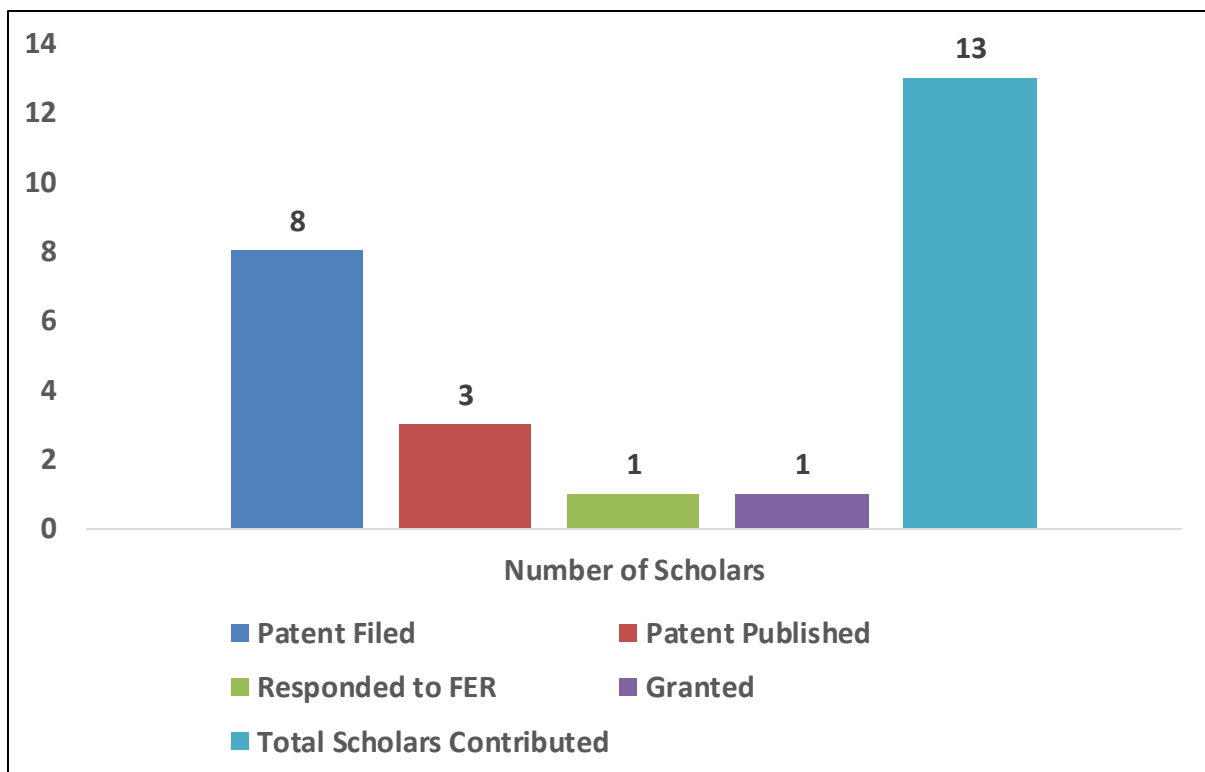


**Figure 8: Distribution of Scholars based on Indexed Journal Paper**

## D. Patent Grants

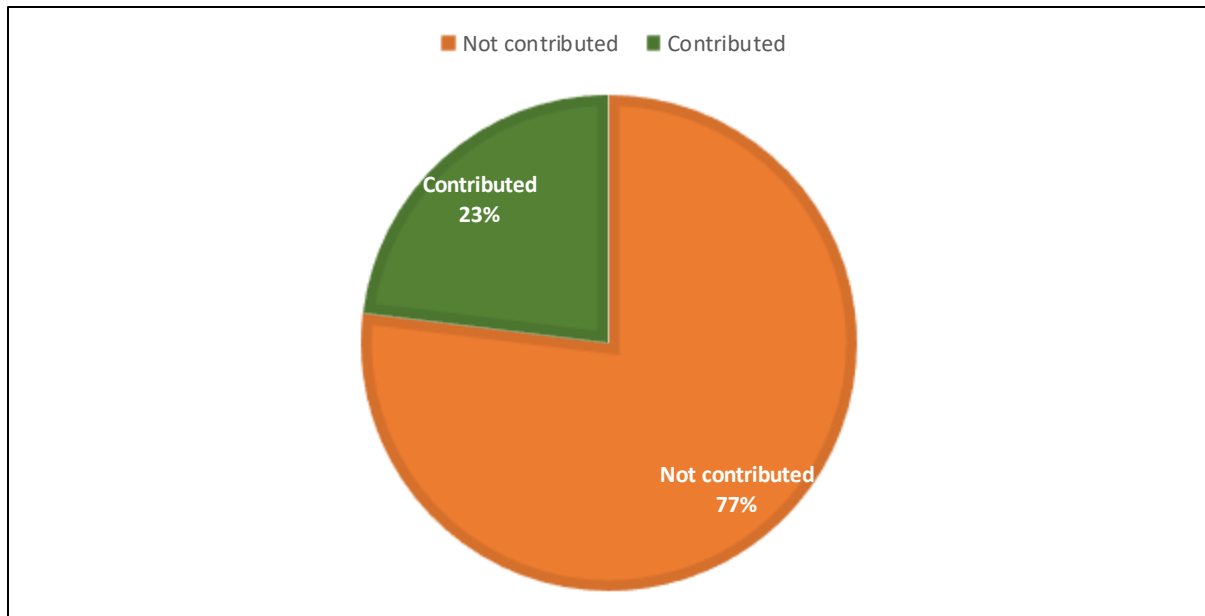


**Figure 9: Number of Scholars Contributed Vs Not Contributed in Patent Grants**

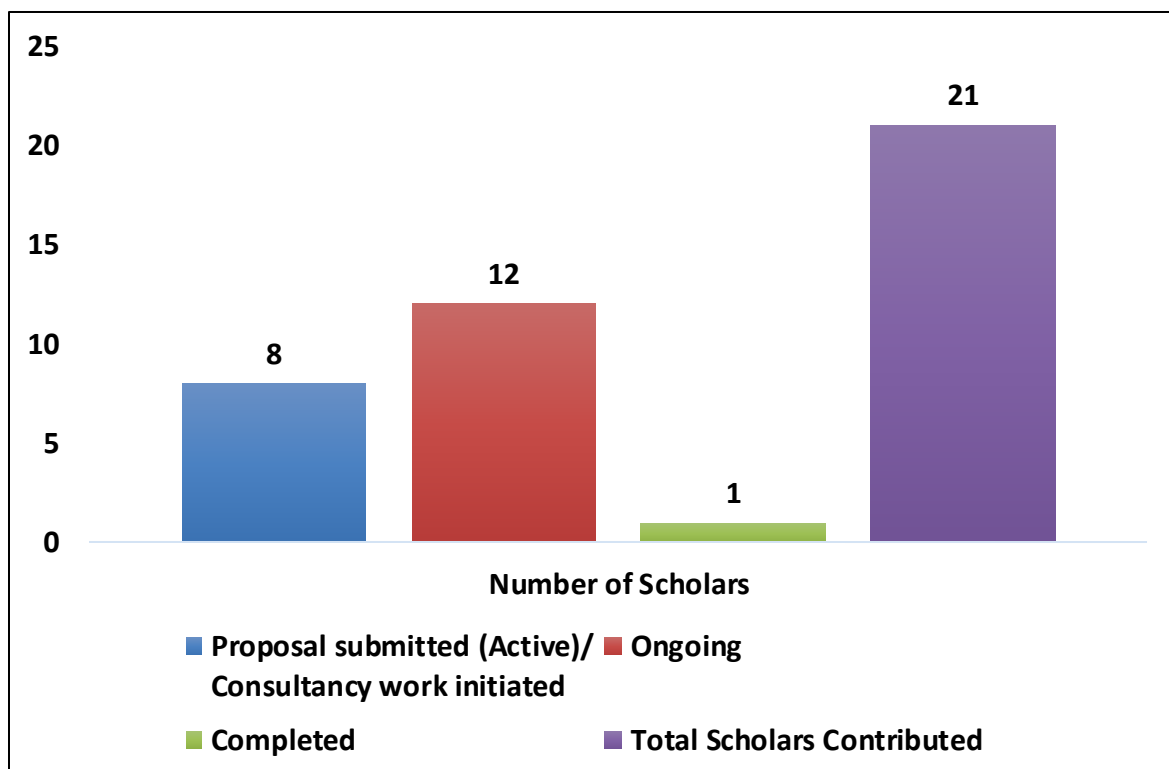


**Figure 10: Distribution of Scholars based on Patent grants**

## E. Funding & Consultancy Details



**Figure 11: Number of Scholars Contributed Vs Not Contributed in Funding & Consultancy**



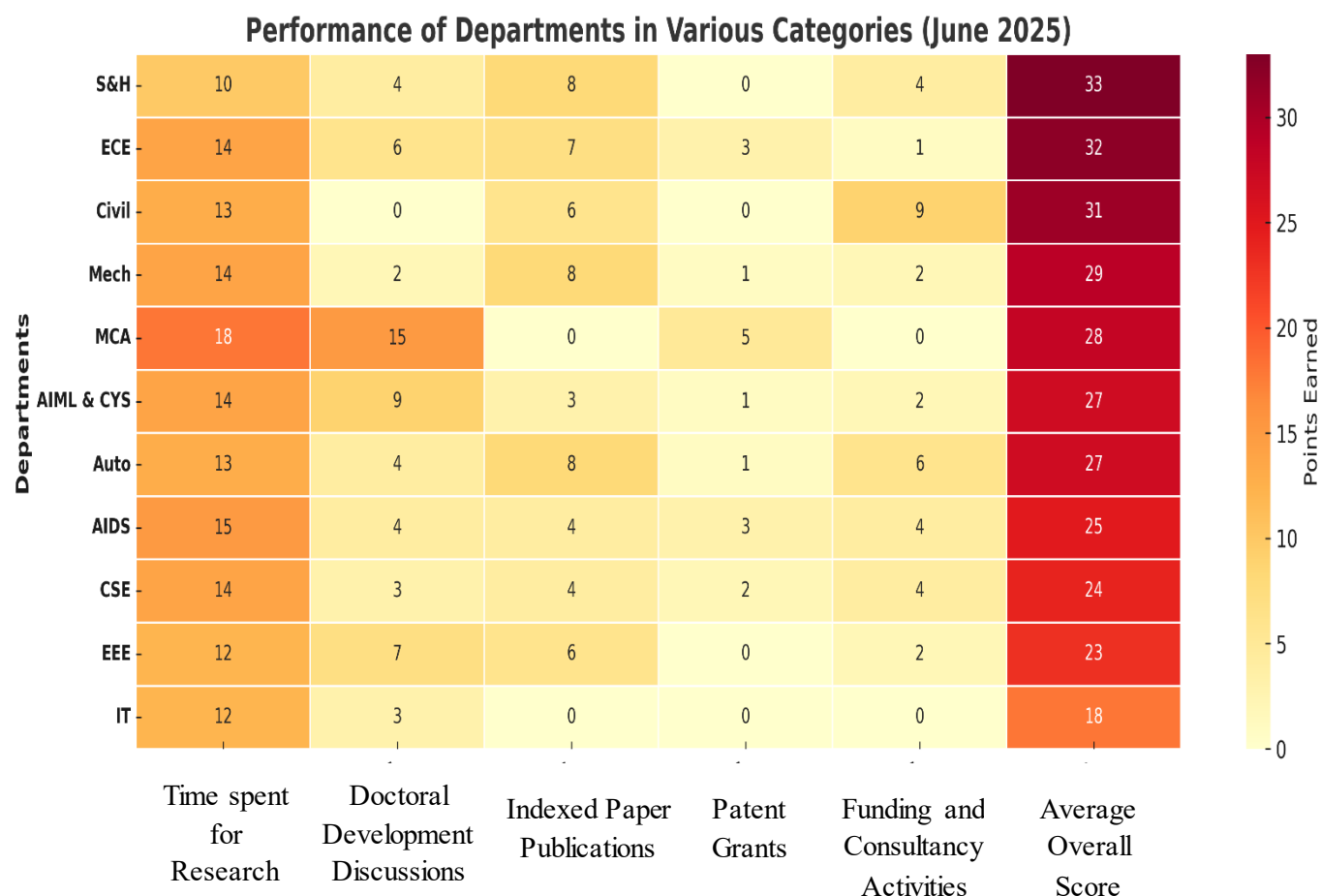
**Figure 12: Distribution of Scholars based on Funding & Consultancy**

## Department wise Performance Analysis

**Table 2: Department wise Average Scores-June 2025**

Departments	Average Points Earned					Average Overall Score
	A. Time spent for Ph.D.	B. Doctoral Development Discussions	C. Indexed paper publications	D. Patent Grants	E. Funding and Consultancy Activities	
<b>S&amp;H</b>	<b>10</b>	<b>4</b>	<b>8</b>	<b>0</b>	<b>4</b>	<b>33</b>
<b>ECE</b>	<b>14</b>	<b>6</b>	<b>7</b>	<b>3</b>	<b>1</b>	<b>32</b>
<b>Civil</b>	<b>13</b>	<b>0</b>	<b>6</b>	<b>0</b>	<b>9</b>	<b>31</b>
<b>Mech</b>	<b>14</b>	<b>2</b>	<b>8</b>	<b>1</b>	<b>2</b>	<b>29</b>
<b>MCA</b>	<b>18</b>	<b>15</b>	<b>0</b>	<b>5</b>	<b>0</b>	<b>28</b>
<b>AIML &amp; CYS</b>	<b>14</b>	<b>9</b>	<b>3</b>	<b>1</b>	<b>2</b>	<b>27</b>
<b>Auto</b>	<b>13</b>	<b>4</b>	<b>8</b>	<b>1</b>	<b>6</b>	<b>27</b>
<b>AIDS</b>	<b>15</b>	<b>4</b>	<b>4</b>	<b>3</b>	<b>4</b>	<b>25</b>
<b>CSE</b>	<b>14</b>	<b>3</b>	<b>4</b>	<b>2</b>	<b>4</b>	<b>24</b>
<b>EEE</b>	<b>12</b>	<b>7</b>	<b>6</b>	<b>0</b>	<b>2</b>	<b>23</b>
<b>IT</b>	<b>12</b>	<b>3</b>	<b>0</b>	<b>0</b>	<b>0</b>	<b>18</b>

## Department wise Performance Analysis - HeatMap Representation



**Figure 13: Department wise Average Scores – June 2025**

**Table 3: Top 10 Ph.D. Scholars in MCET - June 2025**

S.No.	Name & Dept. of the Scholar	A	B	C	D	E	Score * (out of 100)
1.	Ms. V. Arunadevi, S&H	19	20	15	0	15	70
2.	Ms. RAJARAJESHWARI KC, ECE	20	10	20	0	10	60
3.	Ms. Radha K, CSE	20	0	15	20	15	59
4.	Mr. Vijayakkannan K, Mech	5	0	15	5	15	51
5.	Mr. Dinesh kumar J, Mech	18	15	15	0	0	50
6.	Ms. Rajalakshmi K, S&H	4	10	15	0	15	50
7.	Mr. M. Sudharsanan, Civil	9	0	15	0	15	49
8.	Mr. Prabhu Raj M, EEE	20	20	5	0	15	46
9.	Mr. VISHNURAMESHKUMAR R, Auto	19	0	20	0	15	45
10.	Mr. Manikandan A, Civil	20	0	15	0	20	45
11.	Mr. Radhakrishnan C, Auto	17	10	5	5	15	45

\*Scores are based on the data provided by the Scholars

*A. Time spent for Ph.D.  
B. Doctoral Development Discussions  
C. Indexed paper publications  
D. Patent Grants  
E. Funding and Consultancy Activities*

**Table 4: Department Toppers - June 2025**

S.No.	Name & Dept. of the Scholar	A	B	C	D	E	Score * (out of 100)
1.	Ms. V. Arunadevi, S&H	19	20	15	0	15	70
2.	Ms. RAJARAJESHWARI KC, ECE	20	10	20	0	10	60
3.	Ms. Radha K, CSE	20	0	15	20	15	59
4.	Mr. Vijayakkannan K, Mech	5	0	15	5	15	51
5.	Mr. M. Sudharsanan, Civil	9	0	15	0	15	49
6.	Mr. Prabhu Raj M, EEE	20	20	5	0	15	46
7.	Mr. VISHNURAMESHKUMAR R, Auto	19	0	20	0	15	45
8.	Mr. Selvakumar T, AIML & CYS	20	0	20	0	15	42
9.	Mr. Dhyaneswaran J, IT	20	20	0	0	0	28
10.	Ms. K.C.Theepika, MCA	18	15	0	5	0	28
11.	Ms. Indurekaa S R, AI&DS	18	0	10	0	0	28

\*Scores are based on the data provided by the Scholars

**A. Time spent for Ph.D.**  
**B. Doctoral Development Discussions**  
**C. Indexed paper publications**  
**D. Patent Grants**  
**E. Funding and Consultancy Activities**



## Office of Dean Research and Innovation

Dr. Mahalingam College of Engineering and Technology,  
Pollachi – 642003

Web: <https://drmcet.ac.in/research-centres-supervisors/>

Email: [deanri@drmcet.ac.in](mailto:deanri@drmcet.ac.in)